



MICRO SKATE



MICRO SKATE /



SKATES FOR EVERYBODY ๓๔๓๔



A STORY OF URBAN ADVENTURE

Micro Skate has won over countless people with its fantastic performance for getting around. But we've realized something more about urban skating – it's not just about getting from point A to B. Some of us crave weaving through city streets, taking in every view, while others seek the thrill of pushing their skating skills to the limit.

We're Micro Skate, and our story starts with a passion for city living and the excitement of skating. Since 1996, our mission has been simple: to make getting around more fun and flexible for everyone. We're not just about getting to work or school – we're about turning every trip into an adventure, and discovering the beauty of the city along the way.

SKATING TURNS CITY STREETS INTO A PLAYGROUND

Micro Skate isn't just a brand; it's a part of urban life. We believe skating adds a spark to city streets, giving more people the chance to explore, experience, and enjoy the city in a whole new way.

Micro Skate isn't just a way to get around; it's a lifestyle. Every pair of our skates is packed with the spirit of adventure, giving everyone who loves skating a taste of the freedom, energy, and style that comes with gliding through the city.



THE HISTORY OF MICRO SKATES



Founder-Wim Ouboter

1996

Micro was established by Wim Ouboter in Zurich, Switzerland, and Micro Skate began manufacturing and selling skating products.



2002



Micro was sold to the Chinese market, expanding skating development, while Micro Skate has simultaneously obtained international ISO, OEKO, and LGA certificates.



2004

Micro Skate has been widely promoted in the Chinese market, while simultaneously, Micro has begun international trading and become a sponsor for events in Europe.



2006

Micro organized the world's first freestyle competition in China.



2008

The Micro skate line has grown to include Speed Skate and fitness models, alongside some classic designs. Meanwhile, the Micro team has also been exploring the promotion of freestyle skating on a global scale.




2010

Micro held an open freestyle skating competition and obtained the BSCI certificate. Simultaneously, freestyle skating achieved significant success worldwide.



2014

Micro Skate earned the ASTM and TUV International certificates, establishing itself as a formidable skate brand and the preferred choice among consumers.

2017



2018

Micro attended the Germany ISPO and Nuremberg Toy Fair. Following these events, Micro Skate Team welcomed their first brand ambassadors, with more world-class skaters deeply involved in our product research, development, and promotion efforts.



2021

We take pride in being one of the leading skate brands worldwide. Currently, Micro Skates are sold in over 45 countries. In terms of products, we have expanded into the fitness market and now offer high-quality kids', fitness, speed, recreational, and urban skates.

2023

We continuously refine our product lines, striving to introduce high-quality new products tailored to customer needs in categories like kids, urban, and micro delta series. Through market research and active innovation, we've also ventured into the new product line of quad skates.

2024

2024 marked a year of significant expansion for Micro Skate. We successfully entered new markets, including Poland, while also introducing the innovative Firefly series—featuring the Infinite CE Firefly and MT4 Firefly with glow-in-the-dark feature.

2025

We'll unlock a world of exciting new prospects together with you!

ABOUT MICRO SKATE

m-ero
INNOVATIONS SINCE 1999



**MICRO:
BORN IN SWITZERLAND**

QUALITY AND SAFETY: OUR TOP PRIORITIES

At Micro, quality and safety come first. Our products stand out for their exceptional quality and durability.

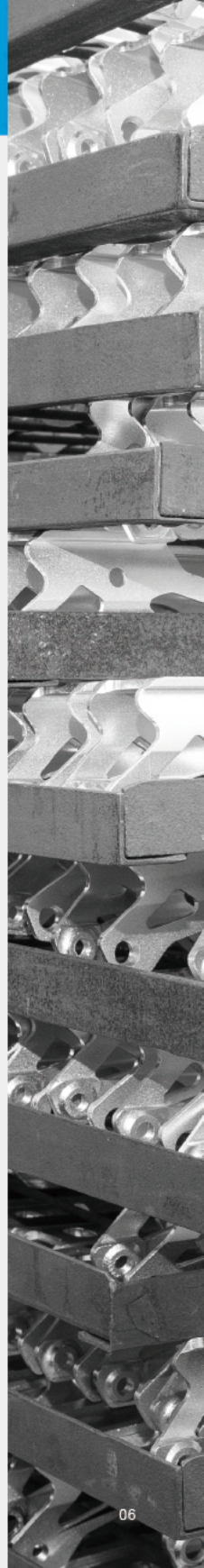
We carefully select the finest raw materials and subject our products to rigorous quality control measures.

Each phase of development and production undergoes various testing procedures to ensure compliance with both national and international safety standards, guaranteeing the highest level of excellence.

FUN FACT: OUR PRODUCTS SURVIVED A DUTCH BRIDGE ENCOUNTER!

During a family vacation in the Netherlands, tourists were amazed to see our products caught in the closing of a lifting bridge in Maastricht.

After about half an hour, when the bridge lifted again, our products emerged unscathed. It's a testament to the durability and resilience of our products!





MICRO ELECTRIC



MICRO B-BIKE



MICRO TRIKE



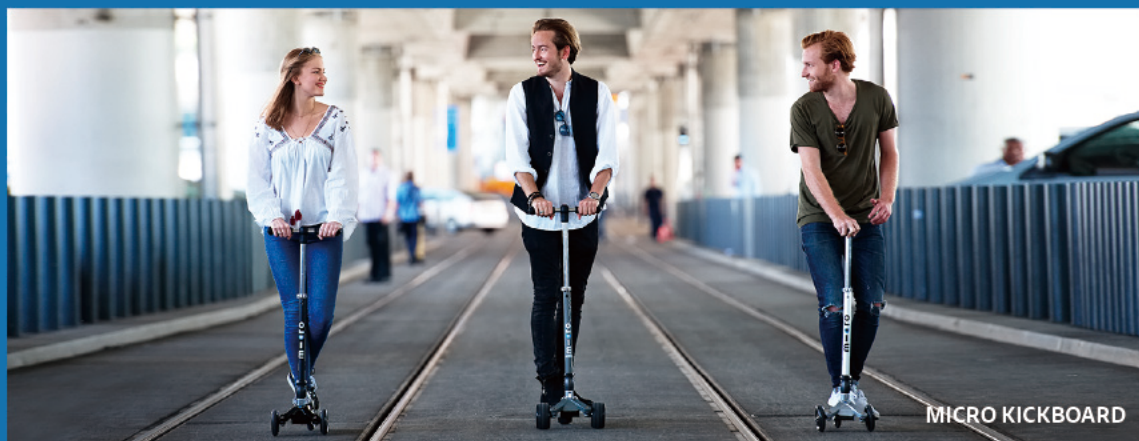
MICROLINO



SKATEBOARD



MICRO SKATE



MICRO KICKBOARD



POWERFUL PRODUCT LINES

Embracing Micro's Quality Principles, Micro Skate is dedicated to enhancing every skating experience, where quality and innovation are paramount.

BRAND STRENGTH: PRODUCTION, SALES, AND SERVICE



DECADES OF EXPERTISE

- With over 20 years of professional experience in skate manufacturing, our team blends scientific expertise with practical know-how.

DIVERSE PRODUCT LINES

- We offer seven high-quality product lines, including Kids, Urban, Fitness, Ice, Quad, Inline Freestyle, and Speed, with over 130 product SKUs available.

GLOBAL REACH

- Micro Skate products are available in 55+ countries worldwide, reflecting our broad international presence.

SKATES FOR EVERYBODY

COLLABORATIVE INNOVATION

- We collaborate with over **50 skilled** skaters and engineers globally to continuously innovate and maintain high-quality standards.

EXCEPTIONAL CUSTOMER SUPPORT

- With a **99% satisfaction** rate in after-sales service, we ensure our customers are supported and satisfied with their purchases.

IMPRESSIVE SALES FIGURES

- Each year, we sell over **1 million** pairs of Micro skates globally, showcasing our brand's popularity and trust.

STRINGENT QUALITY ASSURANCE

- Our products undergo rigorous testing and certification processes in countries like China, Germany, and the USA, guaranteeing adherence to national and international standards, and providing our customers with complete assurance.





OUR GOAL

We're committed to providing high-quality inline and quad skates for all skating enthusiasts, regardless of their skill level. Our mantra, **"SKATES FOR EVERYBODY,"** embodies this dedication.

Furthermore, we have ambitious goals. We aim to lead the way and set trends in the skating world, elevating skating culture to new levels. Our vision is to be the preferred brand known for innovation, style, and an unwavering passion for the sport.



UNLEASHING INNOVATION:

Join us on a journey as we push the boundaries of new technologies, design philosophies, and roller skating culture. Each skate promises an exciting adventure where innovation and surprise converge to redefine your skating experience.

SWISS PRECISION, UNMATCHED THRILLS:

Experience the pinnacle of skating pleasure as we intricately integrate Swiss quality traditions into every detail. Elevate your skating experience with our unwavering commitment to precision and excellence.

GREEN REVOLUTION:

Partner with us in leading the sustainability movement! As pioneers of ecoconsciousness, we pledge to reduce plastic waste, embrace biodegradable materials, and revolutionize product design for a greener tomorrow. Experience the joy of skating while contributing to a sustainable and vibrant future.



2023

DISCOVERY ECO



2024

MT4 FIREFLY - CE FIREFLY

2025

DELTA SPEED ELITE



A grayscale photograph of a person in a workshop, seen from behind, working on a shoe. The person is wearing a light-colored sweater and dark pants. They are standing at a workbench where several shoes are laid out. In the background, there are various workshop items, including boxes and equipment. The overall atmosphere is one of craftsmanship and precision.

CRAFTING EXCELLENCE:

WHERE PRECISION MEETS QUALITY

Experience exceptional quality with our products, combining Swiss precision and craftsmanship. Every stage, from design to packaging, showcases our commitment to excellence. With over 10 meticulous processes and countless hours of craftsmanship, we guarantee our products reflect true Swiss quality.



DESIGN



CUTTING



SEWING



BOUNDING



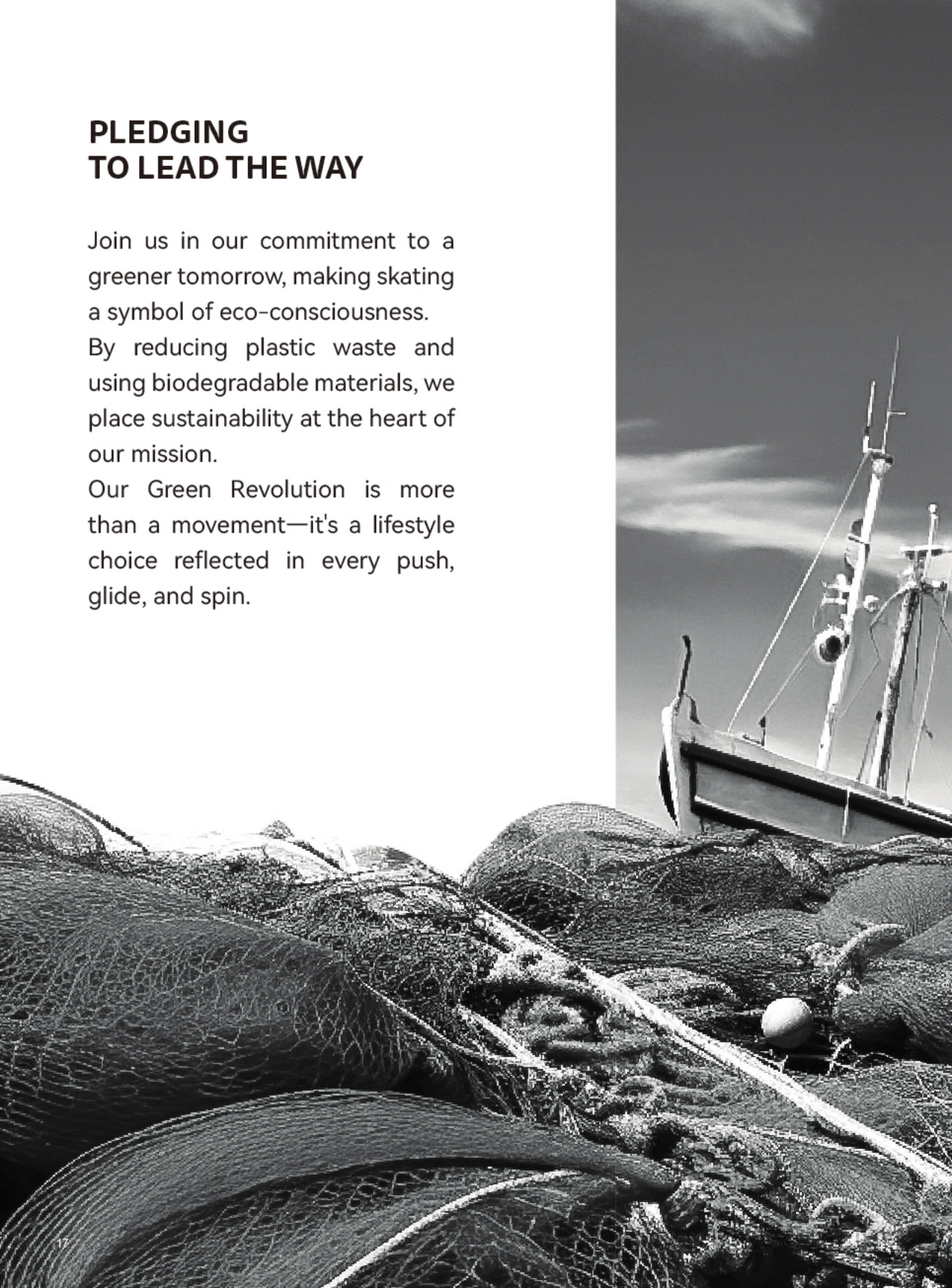
TESTING

PLEDGING TO LEAD THE WAY

Join us in our commitment to a greener tomorrow, making skating a symbol of eco-consciousness.

By reducing plastic waste and using biodegradable materials, we place sustainability at the heart of our mission.

Our Green Revolution is more than a movement—it's a lifestyle choice reflected in every push, glide, and spin.





INTRODUCING ECO-CHIC COLLECTION

Amidst the staggering 8 million tons of plastic waste that floods our oceans yearly, Micro Skate is taking action with our green initiative.

Our Discovery Eco line repurposes discarded fishing nets, ropes, and trawls into eco-friendly products that make a difference.

But our efforts don't stop there. We're committed to setting and surpassing ambitious sustainability targets, expanding our initiatives to combat plastic pollution and safeguard our planet for the future generations.

TAKING ACTION

Guided by our dedication to protecting the planet, Micro Skate is actively fighting against plastic waste.

By reducing our reliance on plastic bag packaging, we are fulfilling our environmental duty and making significant strides toward a cleaner, more sustainable future.

OUR POINTS OF DIFFERENCE

QUALITY MATERIALS, INTERNATIONAL STANDARDS

To meet the demanded quality standards expected by international regulations, our brand utilizes high quality or environmentally friendly materials for the majority of plastic components.

ENDURING EXCELLENCE

Micro Skates aren't just products; they're durable companions crafted for performance. Our inline skates are designed with maintainable and upgradable features from the start, allowing users to easily replace worn-out parts, perform maintenance, and upgrade components as needed. This extends the product's lifespan and maintains excellent performance.



FASTER LEARNING, GREATER COMFORT

All Micro Skate products are ergonomically designed for comfort and optimal fitting, significantly reducing learning time. Additionally, beginner models feature a lower gravity design to minimize the risk of falls and alleviate fear, making it easier for beginners to learn skating quickly.



ROBUST AFTER- SALES SUPPORT

Our dedicated team is committed to addressing your concerns promptly and effectively, providing polished solutions with finesse. Whether it's mastering product functionality, maintenance, or overcoming technical challenges, rely on us for prompt and reliable support, ensuring your satisfaction every step of the way.

ADVANCING ROLLER SKATING GLOBALLY WITH PURPOSE

Over the past six years, we've been dedicated to fostering the skating culture by sponsoring over 100 events in Asia and around the world, reaching 50+ cities and connecting with over 10,000 families.

Our commitment extends beyond these milestones. We're focused on shaping the global narrative of skating responsibly. By raising awareness and promoting participation, we aim to drive responsible skating projects globally and contribute to a more inclusive, sustainable, and joyful future for roller skating communities worldwide.





ADVOCATING FOR A HEALTHIER LIFESTYLE

Skating is more than just a sport; it's a powerful aerobic exercise that promotes physical activity and well-being.

Our efforts aim to inform individuals about the numerous benefits of skating, encouraging a shift from screens to outdoor experiences and fostering meaningful connections with friends and family. Skating enhances physical balance and coordination, while also fostering self-confidence, resilience, and immunity. It's a journey toward a healthier, more balanced lifestyle, promoting personal growth and stronger interpersonal connections. We envision a future where the joy of skating seamlessly integrates with a life of well-being and happiness.





CHAMPIONING SOCIAL RESPONSIBILITY

In addition to promoting roller skating, we're committed to philanthropy. We believe in the power of giving back.

Around the world, there are families and children who miss out on the joy of roller skating due to various circumstances.

Aligned with our brand philosophy, we're dedicated to providing FREE skate equipment to schools, families, or children in need, ensuring everyone has the opportunity to enjoy the sport.

With our capabilities, we aim to create a positive impact and make "skates for everybody" a reality, regardless of circumstances.



m-cro



CULTIVATING TOMORROW'S SKATERS



MICRO TEAM / MEMBERS



WIM OUBOTER

FOUNDER OF MICRO BRAND

MICRO Skates has been at the forefront of both Scooters and Skates, with our Development and Engineering Team dedicated to constant improvement and innovation. Our goal is to deliver nothing short of the best products, designed to delight you.

Thank you for choosing the original! Have a safe ride and enjoy mobility and sport.



PASCAL JOOS

CO-FOUNDER OF MICRO SKATE COMPANY

Our products are characterized by exceptionally high quality and longevity. We meticulously select materials, and at every stage of development and production, each new product undergoes rigorous quality control through various tests. This ensures that all requirements of national and international safety standards are met, guaranteeing a product of utmost reliability and performance.



AMOS PANG

CO-FOUNDER AND CEO
OF MICRO SKATES COMPANY

MICRO Skates stands as a prominent global hub for skate equipment, established in 2016. Founded by individuals with a deep-seated passion and expertise in roller skating, the brand has consistently adhered to an unwavering commitment to craftsmanship and an artisanal approach to design and production. These core values permeate every aspect of the company's endeavors, evident as it expands, goes international, and creates cutting-edge products that resonate with the desires of skaters.



SUNNY QIU

CO-FOUNDER AND CEO
OF MICRO SKATES COMPANY

In addition to crafting exceptional products, MICRO Skates fosters a joyful and passionate sporting environment, ensuring that people can have fun whenever they skate. We appreciate your choice of MICRO Skates, and your support is instrumental in making skating an even more enjoyable and thriving sport.



GEORGE KARPIS

TEAM MANAGER
OF INLINE FREESTYLE

As Team Manager at MICRO Skates, I extend a warm welcome to all skaters who share a love for the sport. If you seek support from MICRO, please don't hesitate to reach out!

MICRO'S WORLDWIDE DISPLAY AND DISTRIBUTION



GLOBAL DISTRIBUTION MAP

- | | | | |
|-------------|-------------|---------------|-------------|
| ○ CANADA | ○ ECUADOR | ○ UK | ○ POLAND |
| ○ USA | ○ BRAZIL | ○ BELGIEN | ○ ITALY |
| ○ MEXICO | ○ CHILE | ○ NETHERLANDS | ○ BIH |
| ○ COSTA RIC | ○ ARGENTINA | ○ SWITZERLAND | ○ ESTONIA |
| ○ PANAMA | ○ PORTUGAL | ○ GERMANY | ○ LITHUANIA |
| ○ COLOMBIA | ○ SPAIN | ○ CZE | ○ BELARUS |



- | | | | | | |
|-----------|----------------|----------------|------------|-------------|---------------|
| ○ UKRAINE | ○ ARMENIA | ○ COD | ○ KOREA | ○ CAMBODIA | ○ PHILIPPINES |
| ○ MDA | ○ IRAQ | ○ SOUTH AFRICA | ○ JAPAN | ○ MALAYSIA | ○ AUSTRALIA |
| ○ RUSSIA | ○ SAUDI ARABIA | ○ KAZAKHSTAN | ○ VIETNAM | ○ MALAYSIA | ○ NEW ZEALAND |
| ○ CYPRUS | ○ IRAN | ○ INDIA | ○ COLOMBIA | ○ SINGAPORE | |
| ○ LEBANON | ○ DUBAI | ○ MALDIVES | ○ ECUADOR | ○ INDONESIA | |
| ○ ISRAEL | ○ EGYPT | ○ CHINA | ○ THAILAND | ○ BRUNEI | |



m-cro

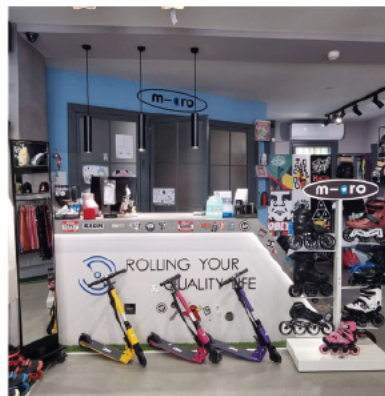
m-cro

Micro Skate's premium products are available in over 50 countries.

Our dedicated global partners actively champion our vision and promote the Micro concept, ensuring alignment with market demands at every sales opportunity.

We're proud of the unwavering commitment and enthusiasm shown by all our partners, who consistently embody Micro Skate as a brand synonymous with innovation and vitality.

**A HEARTFELT THANK YOU
TO ALL MICRO SKATE PARTNERS!**



MICRO SKATE



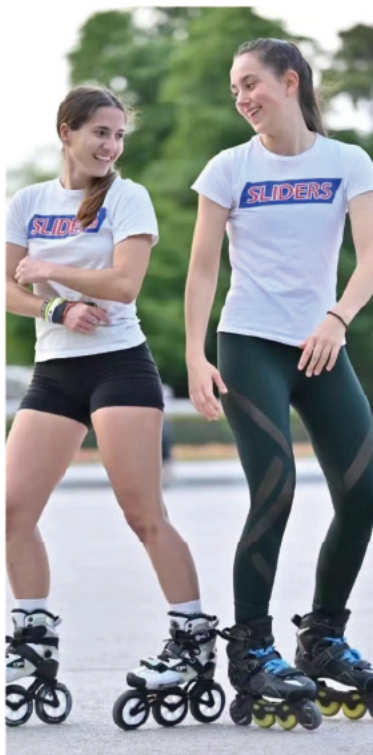
m-cro

MICRO BRAND AMBASSADORS & COMMUNITY

In line with Micro Skate's vision of "Skates For Everybody," we aim to empower every individual interested in exploring or advancing in skating through our products. However, achieving our vision is closely linked to our many brand ambassadors and the vibrant community that surrounds us. Our ambassador team and community continue to grow, with over 20,000 fans worldwide using the #microskates hashtag to share their Micro skating journey.

m-cro





KIDS

Similar to our iconic scooters, Micro Skate's Kids Inline Skates have become an essential part of childhood for countless youngsters globally. From skating to kindergarten to enjoying leisure time outdoors, our products have remained trusted companions for years.

Renowned for their exceptional quality and durability, our children's inline skates are more than just sources of joy. They actively contribute to improving children's balance and coordination, encouraging outdoor activity, and promoting healthier lifestyles.

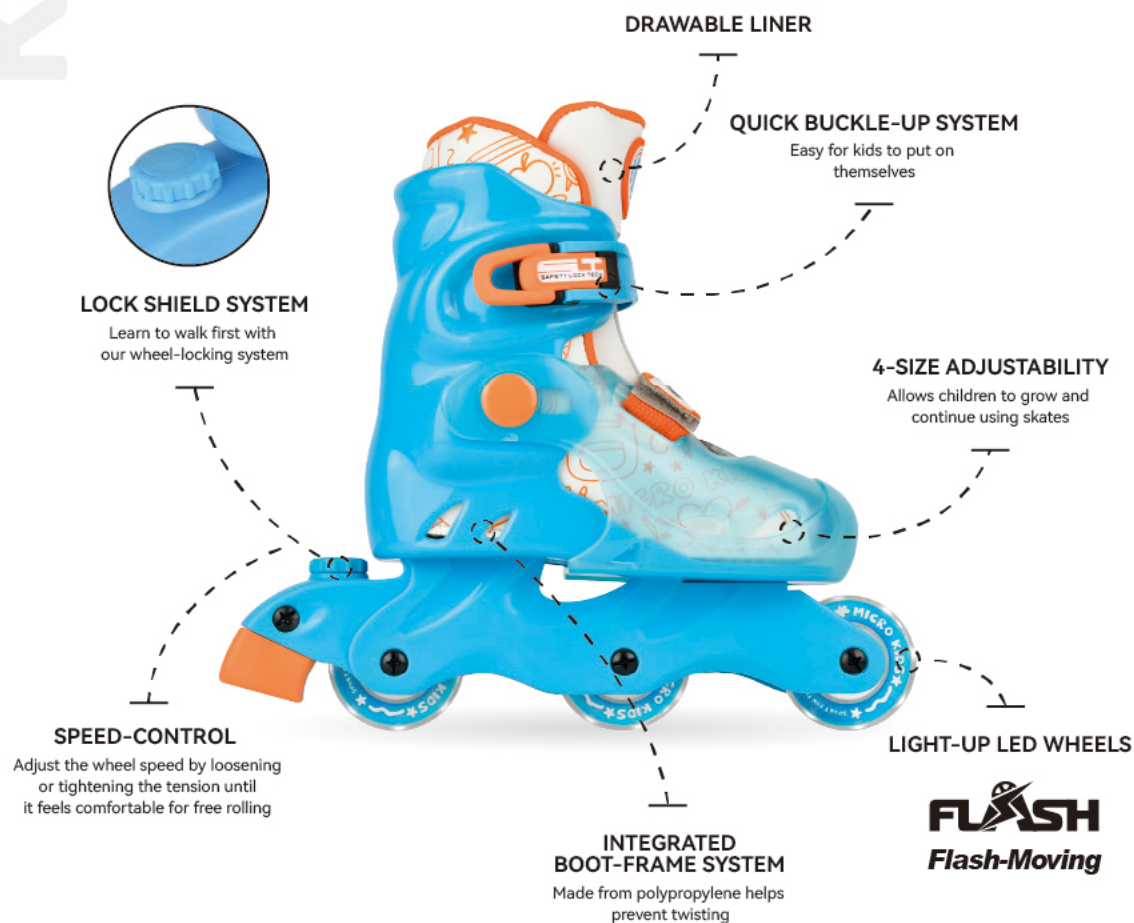
We are proud to have brought smiles to the faces of millions of children and parents with our skates.

Future

■ Lock shield system, make walk anywhere, skating everywhere

● - MIS-FUTURE-BL

● - MIS-FUTURE-PLM



FLASH
Flash-Moving

👤 Age / 3-12 years old

🏠 Max weight / 50kg

🔧 Size / #23-26 #27-30 #31-34



BRAKE

Adjustable rear brake



BEARINGS

ABEC5



WHEELS

80A flat profile



WHEELS *23-30: 3x56mm / *31-34: 4x56mm

Cosmo

■ Stay cool, stay breathable



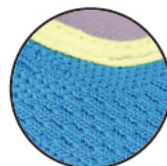
- MIS-COSMO(S70)-BL



- MIS-COSMO(S70)-PUR

FULL COVER POWER CUFF

Crafted from high-resistance polypropylene, providing robust support



EXCELLENT BREATHABILITY

provided by the authentic microfiber material

ADJUSTABLE ANGLE BRAKE PAD

4-SIZE ADJUSTABLE

Allows children to grow and continue using skates



Light weight



Age / 3-18 years old



Max weight / 100kg



Size / #23-26 #27-30 #31-34 #35-38



LOCKING

Safety lock buckle and 45 degree hook and loop ankle strap



SHELL

High Resistant Polypropylene



WHEELS

80A Polyurethane Wheels



BEARINGS

ABEC5



FRAME

Integrated Polypropylene



BRAKE

Adjustable and detachable rear brake



WHEELS * 23-26: 4x58mm / * 27-38: 4x70mm

Joy

- A semi-soft skate revolution:
Lightweight but extremely supportive

○ - MIS-JOY-BL/WH

● - MIS-JOY-BL/PK



Age / 3-18 years old



Max weight / 100kg



Size / #25-28 #29-32 #33-36 #37-40



LOCKING

Safety buckle and 45 degree hook and loop ankle strap



SHELL

High resistant polypropylene



WHEELS

80A polyurethane wheels



BEARINGS

ABEC5



FRAME

Integrated polypropylene



BRAKE

Adjustable and detachable rear brake



WHEELS *25-28: 4x58mm / *29-40: 4x70mm

Discovery

■ 360° safeguard best-selling hard boot skates

● - MIS-DIS-PK

● - MIS-DIS-BK

HIGH RESISTANT POLYPROPYLENE HARD CUFF AND SHELL

Provides stronger support and protection

FAST BUCKLE-UP SYSTEM

Easy to put on and take off

SHOCK ABSORBER



360 Armor



HIGH QUALITY CNC ALUMINIUM FRAME

4-SIZE ADJUSTABLE

Allows children to grow and continue using skates



Age / 5-18 years old



Max weight / 100kg



Size / #29-32 #33-36 #37-40



LOCKING

Safety lock buckle and 45 degree hook and loop ankle strap



LINER

Well padded memory fitted expendable liner



WHEELS

Round profile
85A Polyurethane Wheels



BEARINGS

ABEC7



BRAKE

Adjustable and detachable rear brake



WHEELS * 29-32: 2x64mm + 2x62mm / * 33-36: 2x70mm + 2x68mm / * 37-40: 2x72mm + 2x70mm

New Shaper

■ Extremely ventilated skates with 3D air-permeable material

● - MIS-NS3-PUR

● - MIS-NS3-BL

● - MIS-NS3-BK



Age / 3-18 years old



Max weight / 100kg



Size / #25-28 #29-32 #33-36 #37-40



CUFF

High resistant polypropylene



SHELL

High resistant polypropylene



WHEELS

80A polyurethane wheels



BEARINGS

ABEC5



BRAKE

Adjustable and detachable rear brake



WHEELS * 25-28: 4x58mm / * 29-40: 4x70mm

Discovery Eco


● - MIS-DIS-ECO

- 360° safeguard hard boot skates made with recycled plastic components



 Age / 5-18 years old

 Max weight / 100kg

 Size / #29-32 #33-36 #37-40



CUFF

High resistant polypropylene



LOCKING

Safety lock buckle and 45 degree hook and loop ankle strap



WHEELS

Round profile
85A polyurethane wheels



BEARINGS

ABEC7



BRAKE

Adjustable and detachable rear brake

8 MILLION

Tonnes of plastic waste are entering
the world's oceans every year

MARINE PLASTIC POLLUTION

Has impacted at least 267 species worldwide

11%

Of it stems from the maritime industry

WE RECYCLE

Fishing nets, ropes, and trawls into
DISCOVERY ECO

BENEFITS

- Reducing the waste
- Save depleting landfill space
- Reducing energy consumption
- Reduction in greenhouse gas emissions



WHEELS * 29-32: 2x64mm + 2x62mm / * 33-36: 2x70mm + 2x68mm / * 37-40: 2x72mm + 2x70mm

Infinite

Visible keeps the safe in the night

○ - MIS-S7-WH

● - MIS-S7-BK



Age / 5-18 years old



Max weight / 100kg



Size / #29-32 #33-36 #37-40



CUFF

High resistant polypropylene



LOCKING

Safety lock buckle and 45 degree ankle ratchet buckle



SHELL

High resistant polypropylene



FRAME

CNC aluminium frame With high quality



BRAKE

Adjustable and detachable rear brake



WHEELS

Round profile 85A polyurethane wheels



BEARINGS

ABEC7



WHEELS * 29-32: 2x64mm + 2x62mm / * 33-36: 2x70mm + 2x68mm / * 37-40: 2x72mm + 2x70mm

Infinite LE

■ Eye-catching with colorful miami style

● - MIS-LE-BL

● - MIS-LE-PK

HIGH RESISTANT POLYPROPYLENE HARD CUFF AND SHELL

Provides stronger support and protection

MEMORY-FITTED LINER

Removable and washable

NO-TIE LOCK

Convenient lace fastening solution

SHOCK ABSORBER

4-SIZE ADJUSTABILITY

BRAKE

Adjustable and detachable rear brake



Age / 5-18 years old



Max weight / 100kg



Size / #29-32 #33-36 #37-40



FRAME

6000 series cnc aluminium



WHEELS

Round profile
85A polyurethane wheels



BEARINGS

ABEC7



WHEELS * 29-32: 2x64mm + 2x62mm / * 33-36: 2x70mm + 2x68mm / * 37-40: 2x72mm + 2x70mm

Infinite CE Firefly

■ Family-friendly firefly skates: glowing nighttime adventures together

○ - MIS-CE FFY-BL

● - MIS-CE FFY-YL



Age / 3-18 years old



Max weight / 100kg



Size / #28-31 #30-33 #34-37 #37-40



CUFF

High resistant polypropylene



LOCKING

Safety lock buckle and 45-degree ankle ratchet buckle



FRAME

CNC aluminium frame with high quality



BEARINGS

ABEC7



WHEELS

82A flash wheels



WHEELS

* 28-31: 2x60mm+2x62mm / * 30-33: 2x62mm+2x64mm

* 34-37: 2x68mm+2x70mm / * 37-40: 2x70mm+2x72mm

Infinite CE

■ One skate, enjoy two setups

● - MIS-CE-BL

● - MIS-CE-GR

● - MIS-CE-PK



Age / 3-18 years old



Max weight / 100kg



Size / #28-31 #30-33 #34-37 #37-40



CUFF

High resistant polypropylene



LOCKING

Safety lock buckle and 45-degree ankle ratchet buckle



SHELL

High resistant polypropylene



LINER

Well padded memory fitted expendable liner



FRAME

CNC aluminium frame with high quality



WHEELS

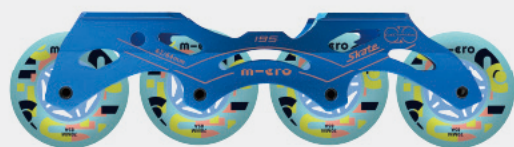
Round profile 85A polyurethane wheels



BEARINGS

ABEC7

FITNESS SET-UP



70mm

68mm

68mm

70mm

SLALOM SET-UP



68mm

70mm

70mm

68mm



WHEELS

* 28-31: 2x60mm+2x62mm / * 30-33: 2x62mm+2x64mm

* 34-37: 2x68mm+2x70mm / * 37-40: 2x70mm+2x72mm

Infinite 3

○ - MIS-INFINITE 3-WH

■ BIG wheels skate for KID



Age / 5-18 years old



Max weight / 100kg



Size / #28-31 #30-33 #34-37 #37-40



CUFF

High resistant polypropylene



LOCKING

Safety buckle and
45 degree ankle ratchet buckle



SHELL

High resistant polypropylene



LINER

Well padded memory
fitted expendable liner



FRAME

6000 series high quality aluminium



WHEELS

Round profile
85A polyurethane wheels



BEARINGS

ABEC7



WHEELS * 28-31: 3x76mm / * 30-33: 3x80mm / * 34-37: 3x84mm / * 37-40: 3x90mm

Champion

■ All-in-one semi-soft skate

● - MIS-S9- OR

● - MIS-S9- BL



Age / 3-18 years old



Max weight / 100kg



Size / #29-32 #33-36 #37-40



LOCKING

Safety buckle and 45 degree ankle ratchet buckle



SHELL

High resistant polypropylene



WHEELS

Round profile 80A polyurethane wheels



BEARINGS

ABEC5



FRAME

6000 series high quality aluminium



WHEELS * 29-32: 4x68mm / * 33-36: 4x72mm / *37-40: 4x76mm

URBAN /

Our urban inline skates go beyond leisure—they're your key to exploring the city.

Whether you're cruising through busy streets, running errands, or meeting friends for coffee, our skates seamlessly blend work and play. They effortlessly take you from home to the bus stop or from the transit hub to the office. No matter the occasion, our urban inline skates adapt to city life with ease.

To ensure we meet everyone's needs, we've worked with skaters worldwide to develop our Urban series. While preferences vary, our Urban products always offer durability, a great fit, and timeless style.



SKATES FOR EVERYBODY



m-cro

MT Plus

■ Budget + Perfect fit + Fast learning= most popular skate



**PROVIDES AIR FLOW AND
KEEP THE FOOT DRY**

From side and bottom vents

THICK MEMORY FIT LINER

Removable and washable

**WIDE BODY CONSTRUCTION
GUARANTEES A PERFECT FIT**

High resistant polypropylene shell

SLIDE PAD

Safeguard against scratches

SHOCK-ABSORBING PAD

For enhanced comfort and protection



Age / 12 years old above



Max weight / 150kg



Size / #36-47



CUFF

High resistant polypropylene



LOCKING

Safety lock buckle and
45 degree ratchet ankle buckle



WHEELS

85A round profile
polyurethane wheels



BEARINGS

ABEC7



FRAME

6000 series high quality aluminium



○ - MIS-MT-PLUS-CR



○ - MIS-MT-PLUS-EMD



○ - MIS-MT-PLUS-VT



○ - MIS-MT-PLUS-SAND



○ - MIS-MT-PLUS-BK



○ - MIS-MT-PLUS-YL



WHEELS * 36-38: 4x76mm / * 39-42: 4x80mm / * 43-47: 4x90mm

MT 3

- Bigger wheels, easier to glide

- - MIS-MT3-CR
- - MIS-MT3-EMD
- - MIS-MT3-BK

THICKEN MEMORY FIT LINER

Features heel lock design for added stability

HIGH-RESISTANT POLYPROPYLENE SHELL

WIDE BODY CONSTRUCTION ENSURES AN IMPECCABLE FIT

SHOCK-ABSORBING PAD

For enhanced comfort

SLIDE PAD

Easily replaceable

SUPER HIGH REBOUND POLYURETHANE BIG WHEELS

85A round profile, 100/110mm

SIDE AND BOTTOM VENTS

Promote airflow



Age / 12 years old above



Max weight / 150kg



Size / #34-36 #37-38 #39-40 #41-42 #43-44 #44-45 #46-47



CUFF

High resistant polypropylene



LOCKING

Durable safety lock buckle and 45-degree power strap



WHEELS

85A super high rebound wheels



BEARINGS

ABEC7



FRAME

6000 series high quality aluminium
(3 wheels setting)



WHEELS * 34-40: 3x100mm / * 41-47: 3x110mm

MT 4 Firefly

■ Glowing Skates: safe, durable, comfortable nighttime skating

● - MIS-MT4 FFY-YL

● - MIS-MT4 FFY-BL

THICKENED MEMORY FIT LINER

Offers paramount Comfort

GLOW-IN-THE-DARK POLYPROPYLENE SHELL

Stays visible and safe

HIGH-RESISTANT WIDE BODY CONSTRUCTION

maximum durability

SHOCK- ABSORBING PAD

HIGH REBOUND FLASH WHEELS

Shines brightly without batteries

SIDE PAD



Age / 12 years old above



Max weight / 150kg



Size / #34-36 #37-38 #39-40 # 41-42 #43-44 #44-45 #46-47



CUFF

High Resistant Polypropylene



LOCKING

Safety lock buckle
and 45-degree ratchet ankle buckle



WHEELS

Round profile
85A Polyurethane Wheels



BEARINGS

ABEC7



FRAME

Casted Aluminium Frame

MT 4

■ Affordable in the price, fresh in the colors

○ - MIS- MT4 LAVA

● - MIS-MT4-PK

THICKEN MEMORY FIT LINER
WITH DUAL SIZING

WIDE BODY CONSTRUCTION
ENSURES AN IDEAL FIT

HIGH-RESISTANT POLYPROPYLENE
SHELL FOR DURABILITY

SIDE AND BOTTOM VENTS
Keeping feet dry and comfortable

SHOCK-ABSORBING PAD
For added comfort

A SLIDE PAD FOR
SCRATCH PROTECTION



Age / 12 years old above



Max weight / 150kg



Size / #34-36 #37-38 #39-40 # 41-42 #43-44 #44-45 #46-47



CUFF

High resistant polypropylene



LOCKING

Top safety buckle
And 45 degree power strap



WHEELS

Round profile
85A polyurethane wheels



BEARINGS

ABEC5



FRAME

Casted aluminium frame



WHEELS *34-38: 4x76mm / *39-47: 4x80mm



WHEELS *34-38: 4x76mm / *39-47: 4x80mm

MT4 FLASH

○ - MIS-MT4 FLASH

■ Cruising in the night, lighting the street



Age / 12 years old above



Max weight / 150kg



Size / #34-36 #37-38 #39-40 # 41-42 #43-44 #44-45 #46-47



CUFF

High resistant polypropylene



LOCKING

Top safety buckle and
45 degree power strap



WHEELS

85A round profile polyurethane
flash wheels



BEARINGS

ABEC5



FRAME

Casted aluminium frame



WHEELS * 34-38 : 4x76mm / * 39-47 : 4x80mm

New Super

● - MIS-SUPER-BK

■ Intense skating made effortless - Slide & Slalom

UNPARALLELED MANEUVERABILITY AND STURDY SUPPORT

High-resistant polypropylene base and cuff

SECURE HEEL LOCK

With the safety shin buckle and
45-degree ratchet strap

LARGER REMOVABLE SIDE PROTECTOR

Shielding the boot from scuffing

A SNUG FIT WITH ADDED RAIN PROTECTION

High-quality composition of leather upper



Age / 12 years old above



Max weight / 150kg



Size / #37-38 #39-40 #41-42 #43-44



LOCKING

Safety lock buckle, 45 degree ratchet ankle
buckle and hook & loop toe strap



BRAKE

Extension liner



WHEELS

85A round profile
polyurethane wheels



BEARINGS

Slalom PRO9



FRAME

6000 series high quality aluminium



WHEELS * 37-38: 4x76mm / * 39-40/41-42/43-44: 4x80mm

Super 3

■ Born from the urban skating movement

● - MIS-SUPER 3-BK

EXCEPTIONAL MANEUVERABILITY AND SOLID SUPPORT

With the high-resistant
polypropylene base and cuff

COMFORTABLE, SNUG FIT WITH ADDED RAIN PROTECTION

High quality composition leather upper

LARGER REMOVABLE SIDE PROTECTOR

To shield the boot from scuffing

3-WHEELED MILO TRISKATE FRAME

For enhanced agility



Age / 12 years old above



Max weight / 150kg



Size / #37-38 #39-40 #41-42 #43-44



CUFF

High resistant polypropylene



LOCKING

Safety lock buckle and
45-degree ratchet ankle buckle



WHEELS

85A super
high rebound wheels



BEARINGS

Slalom Pro9



FRAME

6000 series high quality aluminium



WHEELS * 37-40: 3x100mm / * 41-44: 3x110mm

■ Unleash Your Potential with the Exceptional 3-Wheel Urban Skate

REPLACEABLE SHADOW GUARD LINER CUFF

Could enhance ankle support

REMOVABLE, WASHABLE, AND COMFORTABLE LINER

HIGH-RESISTANT POLYPROPYLENE BASE AND CUFF

For maximum durability and support

ANTI-SLIP PROTECTOR

UNRIVALED COMFORT WITH A SUPER COMFORTABLE MICROFIBER UPPER

Water-repellent to tackle any weather conditions

DISPATCHABLE SHOCK-ABSORBING PAD

Ensuring comfort and safety in skating

RIDE SMOOTHLY WITH 110MM/110MM SUPER HIGH REBOUND BIG WHEELS



Age / 12 years old above



Max weight / 150kg



Size / #35-36 #37-38 #39-40 #41-42 #43-44



CUFF

High resistant polypropylene



LOCKING

Safety lock buckle and
45-degree power strap



WHEELS

85A super
high rebound wheels



BEARINGS

ABEC9



FRAME

Premium 3-wheel milo frame



WHEELS * 35-40: 3×100mm / * 41-44: 3×110mm

FITNESS

Designed with an emphasis on comfort, support, and performance, our fitness skates are ideal for prolonged sessions and a diverse range of skating endeavors.

Whether you're leisurely cruising along scenic routes, challenging yourself with interval training, or participating in group fitness sessions, our fitness inline skates provide stability and responsiveness necessary for a fulfilling workout experience.

Mood

● - MIS-MOOD-BK

■ Get started on your fitness journey effortlessly!


**SUPERIOR STABILITY
WITH THE DUAL DENSITY CUFF**

FAST-TRACK LACING SYSTEM
Say goodbye to traditional lacing


TOP-GRADE SEMI-SOFT UPPER
Designed for ventilation to keep you cool

**CUSTOMIZE YOUR RIDE WITH
THE ANGLE-ADJUSTABLE BRAKE PAD**

**ROLL SMOOTHLY WITH
SUPER HIGH REBOUND WHEELS**

 Age / 12 years old above

 Max weight / 150kg

 Size / #38-46



LOCKING

Safety lock buckle and
45 degree ratchet ankle strap



SHELL

High resistant polypropylene



WHEELS

83A polyurethane wheels



BEARINGS

ABEC7



FRAME

High quality aluminium frame



WHEELS * 38-40: 4x84mm / * 41-46 : 4x90mm

ICE

With our extensive experience in inline skate production, we've introduced a specialized line of ice skates crafted to deliver top-notch quality for ice skating enthusiasts.

Our ice skates are carefully engineered to offer unmatched stability, precise control, and effortless agility on the ice, enabling skaters to fully enjoy the thrill of gliding across frozen surfaces.

Zero Plus

- Adjustable ice skates designed for novice kids taking their first steps on the ice

- MIS-ZERO PLUS-PUR
- MIS-ZERO PLUS-PK
- MIS-ZERO PLUS-BL



Age / 3-18 years old



Max weight / 100kg



Size / #29-32 #33-36 #37-40



CUFF

High resistant polypropylene



LOCKING

Safety lock buckle and 45 degree hook and loop ankle strap



LINER

Warm insulated fleece liner



Zero Pro

■ Superior fit, unwavering stability

○ - MIS-ZERO PRO-WH

● - MIS-ZERO PRO-BK

ENHANCED SUPPORT AND DURABILITY

Thanks to the strong shell construction



Age / 8 years old above



Max weight / 150kg



Size / White: #36 #37 #38 #39 #40

Black: #41 #42 #43 #44 #45



CUFF

High resistant polypropylene



LOCKING

Safety shin buckle and
45 degree hook and loop ankle strap



QUAD

Roller skating is a beloved classic activity, cherished by many. At Micro Skate, we're excited to offer a diverse range of quad roller skates suitable for both indoor and outdoor use. Featuring unique designs, superior fit, and durability, our skates guarantee a stylish and comfortable experience. Additionally, our adjustable children's skates make it easy for kids to join in on the fun.

Twilight

■ Stand out in the crowd with the captivating holographic colorway

● - MRS - TL- IRID

● - MRS-TL-IRID (ADJ.)

MESMERIZING HOLOGRAPHIC FABRIC

For style and durability

**PREMIUM MEMORY
AND FITTING FOAM**

**SECURE FIT WITH METAL
SPEED LACE EYELETS**



TWILIGHT ADJ.



TWILIGHT



**ALUMINIUM ALLOY TRUCKS
AND BASEPLATE**

Stability and maneuverability

**SMOOTH RIDE ON
58MM URETHANE FLASH WHEELS**



Age / 12 years old above



Age / (Adj.) 6 years old above



Max weight / 150kg



Size / #35-44



Size / (Adj.) #31-34 #35-38 #39-42



UPPER
TPU



FRAME
6000 series high quality aluminium



BEARINGS
ABEC7





WHEELS *4x58mm flash wheels

Umbra

■ Classic black meets vegan-friendly

● - MRS-UB-BK

● - MRS-UB-BK (ADJ.)

PREMIUM MEMORY AND FITTING FOAM

For personalized comfort

METAL SPEED LACE EYELETS

For durability and easy lacing



UMBRA ADJ.



UMBRA



ALUMINIUM ALLOY TRUCKS

Ensure agility and long-lasting performance

FLASH WHEELS

58mm diameter, 85A durometer for a smooth ride



Age / 12 years old above



Age / (Adj.) 6 years old above



Max weight / 150kg



Size / #35-46



Size / (Adj.) #31-34 #35-38 #39-42



UPPER

Micro fiber leather



FRAME

6000 series high quality aluminium



BEARINGS

ABEC7



WHEELS *4x58mm flash wheels



MICRO / DELTA COLLECTION

Micro Delta products are designed to excel in high-level skating competitions while also being ideal for daily training. Crafted with exceptional quality and durability, our products use carefully selected materials. Each new product undergoes rigorous quality control at every stage of development and production to meet national and international safety standards.

At Micro Delta, we are committed to craftsmanship and meticulous design and manufacturing. These values are evident in all aspects of our operations as we expand globally and create contemporary skater essentials.



SKATES FOR EVERYBODY

 **MICRO
DELTA**





INLINE FREESTYLE

Micro Delta Inline Freestyle skates epitomize excellence in skating gear. Crafted to cater to various ages and disciplines, our skates undergo meticulous testing and refinement alongside skaters worldwide. Designed with ergonomic precision, each model ensures optimal performance for both training and competitive events, all while prioritizing comfort. Whether you're cruising the streets or training for competitions, Micro Delta Inline Freestyle skates provide unmatched responsiveness and an exceptional skating experience.

Delta Recreation

■ The ultimate bang-for-buck model

● - MIS-DR-BL

● - MIS-DR-PK

FULL COVER POWER SUPPORT CUFF

Ensures perfect support for your ankles

GOLDEN TRIANGLE FLAP CONFIGURATION AND SAFETY LOCK BUCKLE

Provide unparalleled envelopment and stability

CRAFTED FROM DURABLE AUTHENTIC MICROFIBER MATERIAL

For longevity, breathability,
and eco-friendliness

HEAT-MOULDABLE SHELL FOR A CUSTOM FIT



THICKENED SPRING WHEELS

Made from high-rebound 82A polyurethane



Age / 8 years old above



Max weight / 150kg



Size / #27-29 #30-32 #33-35 #36-38



FRAME

High quality CNC aluminium
Rockered frame



BEARINGS

ABEC7



SIZE	27-29		30-32		33-35		36-38
------	-------	--	-------	--	-------	--	-------

WHEELS (mm)	4x68		4x68		4x72		4x76
-------------	------	--	------	--	------	--	------

FRAME (mm)	207		207		219		231
------------	-----	--	-----	--	-----	--	-----



Delta Liberty

■ Maximum support. Durability. Versatility.

● - MIS-DL-IRID

● - MIS-DL-SILVER

MICRO SKATE'S PATENT CUFF

Ensuring maximum lateral support and flexibility

MOLDABLE CARBON FIBER SHELL

Providing high-strength support
super lightweight feel

HOLOGRAPHIC FABRIC FOR A CAPTIVATING APPEARANCE

MEMORY FITTED LINER FOR PERSONALIZED COMFORT

84A SUPER HIGH REBOUND POLYURETHANE WHEELS



Age / 8 years old above



Max weight / 150kg



Size / #27-29 #30-32 #33-35 #36-38 #39 #40 #41 #42 #43



LOCKING

Safety locked of skating velcro shin
Strap and 45 degree ratchet ankle strap



FRAME

High quality
CNC aluminium frame



BEARINGS

Micro Slalom PRO9



SIZE	27-29		30-32		33-35		36-38		39/40		41/42/43
WHEELS (mm)	4x68		4x68		4x72		4x76		4x76		4x80
FRAME (mm)	207		207		219		231		231		243

Delta X

- Top-level setup designed for young techies with a vibrant aesthetic.

● - MIS-DX-BL

● - MIS-DX-PK

PATENTED MICRO SKATE CUFF FOR UNPARALLELED STABILITY

Experience exceptional responsiveness and maximum lateral support

ERGONOMIC MEMORY FIT LINER FOR COMPATIBILITY

Indulge in customized fit and performance

HIGHLY COMFORTABLE MICROFIBER UPPER

Enjoy high comfort and style

HEAT-MOLDABLE CARBON FIBER SHELL

Benefit from lightweight durability



82A SUPER HIGH REBOUND POLYURETHANE WHEELS

Roll smoothly and responsively



Age / 12 years old above



Max weight / 150kg



Size / #27-29 #30-32 #33-35 #36-38



LOCKING

Safety lock buckle and 45 degree ratchet ankle buckle



FRAME

High quality CNC aluminium rockered fame



BEARINGS

Micro Twincam ILQ-9 Pro Urban Plus



SIZE	27-29	30-32	33-35	36-38
WHEELS (mm)	4x68	4x68	4x72	4x76
FRAME (mm)	207	207	219	231

Delta Acceleration

● - MIS-DA-BK

■ Poised for victory in speed slalom

UNLOCK MAXIMUM FLEXIBILITY WITH
THE HIDDEN PATENTED CUFF

SECURE FIT WITH THE DUAL BUCKLE
LOCKING MECHANISM

CARBON SHELL BOTT'S
HIGHT-TOP DESIGN

Experience maximum ankle support

SUPER
LIGHTWEIGHT

85A SUPER-REBOUND
SS WHEELS

LAVA TRISKATE ROCKERED FRAME

Navigate with precision using



Age / 8 years old above



Max weight / 150kg



Size / #36-44



UPPER

Micro fiber leather



LINER

3D shaped memory foam,
durable and breathable ventilated liner



FRAME

7000 series
high quality aluminium



BEARINGS

Micro TwinCam
ILQ-9 Pro Urban Plus



SIZE	36/37/38/39/40 41/42/43/44	
WHEELS (mm)	3x90	3x100
FRAME (mm)	213	234

Delta Noval

- Heat-moulded for speed slalom excellence

● - MIS-DN-BL

● - MIS-DN-PK

BUILT-IN MEMORY FIT LINER

Indulge in comfort and perfect command control

HEAT-MOULDABLE BOOT FEATURING HEAT TECH FORMING

CARBON CONSTRUCTION SHELL AND MID-CUT DESIGN

Maximum ankle support

SUPER
LIGHTWEIGHT

Petite
Size

85A SUPER-REBOUND SS WHEELS

Roll with confidence

LAVA TRISKATE ROCKERED FRAME

Crafted from 7000 series aluminium



Age / 8 years old above



Max weight / 150kg



Size / #31 #32 #33 #34 #35 #36 #37 #38 #39 #40 #41 #42 #43



CUFF

High resistant polypropylene



LOCKING

Safety lock buckle and 45 degree hook and loop ankle strap



UPPER

Micro fiber leather



BEARINGS

Slalom Pro 9



SIZE 31-40 | 41-43

WHEELS (mm) 3x90 | 3x100

FRAME (mm) 213 | 234

HML Pro

● - MIS- HML PRO-RD

- A collaboration with top 10 inline freestyle skater
- Hsieh Mu Lun

TOP HEAT-MOLDED CARBON SHELL WITH CUFF

Lightweight yet supportive
for optimal performance

PREMIER MICROFIBER UPPER

Ventilated design ensures breathability
and a snug fit



SUPER HIGH REBOUND WHEELS

For smooth and responsive skating

BAT ROCKERED FRAME

Crafted from high-quality aluminium
for durability and precision



Age / 12 years old above



Max weight / 150kg



Size / #34 #35 #36 #37 #38 #39 #40 #41 #42 #43 #44



LOCKING

Safety lock buckle and
45 degree ratchet ankle buckle



LINER

Memory foam liner



BEARINGS

Micro Twincam
ILQ-9 Pro Urban Plus



SIZE	34-40		41-44
WHEELS (mm)	4x76		4x80
FRAME (mm)	231		243

Delta Plus

● - MIS-DP-BK

■ Elevating comfort to new heights



Age / 12 years old above



Max weight / 150kg



Size / #38-44



FRAME

High quality
CNC aluminium rockered frame



LOCKING

Safety lock buckle and
45 degree ratchet ankle buckle



SIZE	38-40 41-44
------	---------------

WHEELS (mm)	4x76 4x80
-------------	-------------

FRAME (mm)	231 243
------------	-----------

Delta Plus Carbon

● - MIS-DPC-BK

- Experience enhanced support with a 100% carbon cuff

100% CARBON CUFF FOR EXTRA STIFFNESS

Experience ultimate stiffness and control

MEMORY FIT LINER, THICKENED FOR A SNUG

Indulge in enhanced comfort and fit

MICROFIBER UPPER FOR A NICE SNUG FIT

Enjoy optimal support and fit

HEAT-MOULDABLE CARBON SHELL

Customize your fit

HIGH-REBOUND POLYURETHANE WHEELS

85A round profile

MICRO TWINCAM ILQ-9 PRO URBAN PLUS

Experience silent and high-speed rotation



Age / 12 years old above



Max weight / 150kg



Size / #38-44



LOCKING

Safety lock buckle and 45-degree ratchet ankle buckle



FRAME

High quality CNC aluminium rockered frame



SIZE 38-40 | 41-44

WHEELS (mm) 4x76 | 4x80

FRAME (mm) 231 | 243

Delta Force

● - MIS-DF-BK

■ Pioneering the quintessential classic, forever.

PERFECT MEMORY FIT LINER

WRAP PERFECTLY WITH
A NICE SNUG FIT

Thanks to the microfiber upper

100% HEAT-MOLDING
CAPABILITIES ENSURE COMFORT

Even during long training sessions

**Extended
Size**


Petite Size

HIGH-REBOUND POLYURETHANE
PERFORMANCE WHEELS

4x85A round profile

ENJOY HIGH PRECISION AND
SILENT OPERATION

With Micro Twincam ILQ-9 Pro Urban Plus



Age / 12 years old above



Max weight / 150kg



Size / #35-46



CUFF
Carbon fiber



LOCKING
Shin ratchet buckle,
45-degree ratchet ankle buckle



FRAME
High quality
CNC aluminium frame



SIZE	35-40 41-46
------	---------------

WHEELS (mm)	4x76 4x80
-------------	-------------

FRAME (mm)	231 243
------------	-----------

Delta Force II

■ Stand out with sleek design and top performance

○ - MIS-DF II-SV

● - MIS-DF II-BK



Age / 12 years old above



Max weight / 150kg



Size / #35-46



UPPER
Micro fiber



CUFF
Carbon fiber



LOCKING
Shin ratchet buckle,
45-degree ratchet ankle buckle



BEARINGS
Micro TwinCam
ILQ-9 Pro Urban Plus



SIZE 35-40 | 41-46

WHEELS (mm) 4x76 | 4x80


FRAME (mm) 231 | 243

D3LTA

● - MIS-D3LTA-BK

- 3-wheel carbon skates for urban skating



 Age / 12 years old above

 Max weight / 150kg

 Size / #35-46



UPPER
Micro fiber



LOCKING
Shin ratchet buckle, 45 degree
ratchet ankle buckle and hook & loop toe strap



SIZE

35-39 | 40-42 | 43-46

WHEELS (mm)

3x100 | 3x110 | 3x125

FRAME (mm)

210 | 230 | 260



SPEED

Micro Skate's Speed Inline skates are designed to offer skaters the competitive edge required to improve their race times. The entire product lineup includes lightweight carbon fiber shells, high-quality aluminum frames, precision bearings, and more.

NEW DSJ

- Easily switch, 3/ 4 wheels compatible

● - MIS-DSJ-PK

● - MIS-DSJ-BL

EXTENDED COLLAR DESIGN

Enhanced ankle fit and flexibility

CARBON FIBER SHELL

Lightweight and more custom fit

SURELATCH ANKLE BUCKLE

Secure fit and tight, withstands impacts

ERGONOMIC LAST DESIGN

Perfect fit through extensive testing



SIZE-ADJUSTABLE 3D INSOLE

Boosts comfort and performance

5-HOLE HIGH-QUALITY CNC ALUMINIUM FRAME

Easy switch between 3 and 4 wheels



Age / 3-18 years old



Max weight / 100kg



Size / #27-29 #30-32 #33-35 #36-38



UPPER

Super micro fiber leather



WHEELS

85A super high rebound polyurethane wheels



BEARINGS

Micro Twincam ILQ-9 Pro Urban Plus





SIZE	27-29	30-32	33-35	36-38
WHEELS (mm)	4x84	4x84	4x90	4x90
MOUNTING(mm)	150/165	150/165	165/195	165/195

Delta Speed Elite

○ - MIS-DSE-WH

■ Elite speed, zero limits



Age / 12 years old Above



Max weight / 150kg



Size / #36 #37 #38 #39 #40 #41 #42 #43 #44



UPPER

Super micro filber



WHEELS

85A high-rebound PU wheels



BEARINGS

Micro Twincam
ILQ-9 Pro Urban Plus



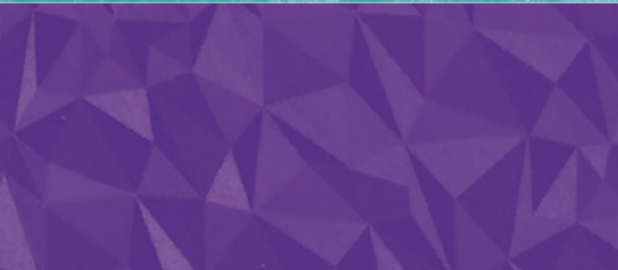
SIZE	36/37/38		39/40		41/42/43/44
WHEELS (mm)	4x90		4x100		4x110
MOUNTING(mm)	165/195		165/195		165/195

m-cro

DESIGN / YOUR OWN

Would you like a skate that's special and unique to you? Micro can make that happen! We offer unique materials, a variety of frame and wheel colors, and even embroidery with your name on the skate. Let us create a one-of-a-kind skate just for you. Enjoy the custom skate experience!





**Delta
Acceleration
[DYO]**



**Delta
Force
[DYO]**



**Delta Junior
[DYO]**



**Delta
[DYO]**

**DESIGN
YOUR
OWN**

FRAME /



FIRE

MSA-FFR-BK



LAVA

MSA-LVFR-BK



LAVA GEN3

MSA-LVFR3.0-PK



MSA-LVFR3.0-BK



MILO

MSA-MFR-BK



HOT

MSA-FR-SV



MSA-FR-RD



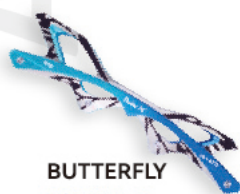
MSA-FR-BL



MSA-FR-BK



MSA-FR-GD

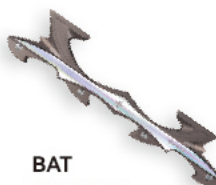


BUTTERFLY

MSA-BYFR-BL



MSA-BYFR-PK



BAT

MSA-BFR-SV



FIRE

MSA-MFR2-BK



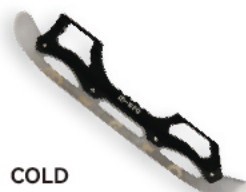
LAVA

MSA-MFR2-SV



PALM 5

MSA-PALM5 FR-BK



COLD

MSA-CF-BK



COLD FRAME BLADE

MSA-IBW

WHEELS /

■ DIA-100/110mm



SS

MSA-SSWH-BK

■ DIA-84/90/100/110mm



DS

MSA-DSWH-WH

■ DIA-100/110/125mm



FLOW

MSA-FLW-BK

■ DIA-76/80mm



TORNADO

MSA-TNDWH-BK



MSA-TNDWH-SV



MSA-TNDWH-PUR

■ DIA-68/72/76mm



DX

MSA-NDXWH-BL



MSA-NDXWH-PK

■ DIA-68/70/72/76/80mm



CRYSTAL

MSA-CRYWH-BL



MSA-CRYWH-PK



MSA-CRYWH-TR

■ DIA-76/80mm



PERFORMANCE

MSA-SRWH-RD



MSA-SRWH-YL



MSA-SRWH-BL



MSA-SRWH-GR



MSA-SRWH-BK

■ DIA-76/80mm



FLASH

MSA-DFLWH-BL



MSA-DFLWH-PK



MSA-DFLWH-GRE



MSA-DFLWH-PUR

■ DIA-90/100/110/125mm



FLASH

MSA-DFLWH-PEARL



■ DIA-70mm



MSA-MJWH-BL



MSA-MJWH-RD

BEARING /

GSA CERAMICS BEARING

MSA-GCB-BK



MICRO TWINCAM BEARINGS

MSA-BE-ILQ-9



SLALOM PRO 9 BEARING

MSA-BE-PRO 9-BL



PROTECTION /



FLY HELMET

MSA-KHE-PK



MSA-KHE-BL



CROWN HELMET

MSA-SPHE-BK



MSA-SPHE-WH



MSA-SPHE-BL



MSA-SPHE-PK



FLASH HELMET

MSA-FLHE-SAND



ROUND HELMET

MSA-RHE-BK



IMPACT PROTECTIONS

MSA-PR-BL



MSA-PR-PK



SHOCK PROTECTIONS

MSA-PR-BK



MSA-PR-FFY YL



SHOCK (W) PROTECTIONS

MSA-RPR-WH



BUTTOCK PROTECTION

MSA-CRP-BL



MSA-CRP-PK

BAG /



MINI SKATE BACKPACK

MSA-MSBP-BK



KIDS BACKPACK

MSA-BPB-BL



MSA-BPB-BK



MSA-BPB-PK



BASIC BAG

MSA-SKBG-BL



MSA-SKBG-PK



SKATE BACKPACK

MSA-SBP-BK/GREY



MSA-SBP-BK/GRE



TROLLEY BAG

MSA-DTRL-BK



OTHER /



BRAKE SET

MSA-BR-MT-PP



MSA-BR-MT



GREY SOCKS

MSA-SSKP-GY



KIDS SOCKS

MSA-SSKP-BL



MSA-SSKP-PK



CARBON CUFF

MSA-DFCU-BK



BEARINGS PRESS

MSA-BE-PRESS-GRAY

OTHER /



CONE

MSA-CO-BL/RD/GR/PK/YL



CRASH PAD

MSA-CRP-BK



SKIN SUIT

MSA-NKSKSU-BL



MSA-NKSKSU-PK



WHEEL COVER

MSA-WC-BK/PK/BL



BRACELET

MSA-BCT-BL



MSA-BCT-PLM



MDSA-BCT-BK



CAP

MSA-CAP-GY



TOOLS BAG

MSA-NPB-FOC-BL/PK/PUR/YL/BK

THE IMPACT OF A LOWER FRAME HEIGHT



Understanding the importance of lowering the center of gravity for beginners was paramount. The challenge? Ensuring safety while aiding novices in finding their balance and accelerating their skating journey.

After numerous trials, a breakthrough emerged: lowering the Infinite CE skate frame by 5mm. While seemingly minor, this adjustment proved transformative.

Imagine a child, unaware of the change beneath their feet, lacing up their skates. With each glide, they find newfound stability and balance, courtesy of the lower frame height. This subtle shift not only enhances stability but also unlocks flexibility and control previously out of reach.

Lowering the center of gravity is crucial for beginners. The challenge was ensuring safety while helping novices balance and progress quickly.

After extensive trials, we made a breakthrough: lowering the Infinite CE skate frame by 5mm. This small change makes a big difference. Imagine a child lacing up their skates and feeling more stable with each glide. This lower frame height enhances stability, flexibility, and control, making skating easier and more enjoyable for everyone.



Thanks to this innovation, children quickly progress from beginners to skilled skaters. The ingenious design of the Infinite CE skate makes their journey smoother and faster. It's not just a measurement; it's a testament to innovation, opening up endless possibilities for young skaters.

BREAKING BOUNDARIES: ALINE SAYURI'S JOURNEY TO SKATING SUCCESS



Aline Sayuri is a talented athlete from Brazil with Japanese heritage and a valuable member of the Brazilian freestyle freejump team.

Aline's journey into the world of skating began in 2017 when she immediately fell in love with the sport's sense of liberation. Discovering the Free Jump modality ignited Aline's passion even further, leading her to compete in various competitions since then.

For Aline, the allure of skating lies in pursuing challenges and constant self-improvement. Motivated by the desire to soar higher with each jump and to refine her skills every day, she embraces every opportunity to push her limits and achieve new heights.





**ALINE HAS SHOWCASED
HER EXCEPTIONAL TALENT
AT VARIOUS
PRESTIGIOUS EVENTS.**



World Skates Games 2022 – Jump Senior Female – 3rd place

Holder of the Americas record in the Freestyle Freejump modality (2019 ~ 2022)

1x South American Gold in the Freestyle Freejump modality

2x Silver South American in the Freestyle Freejump modality

6x National Gold in the Freestyle Freejump modality

1x National Silver in the Freestyle Freejump modality

INTERVIEW:

WHAT PROMPTED YOU TO START AND FALL IN LOVE WITH SKATING?

- I've always been passionate about winter sports, particularly ice skating, which enchanted me. However, in Brazil, practicing this sport was challenging. As I grew older, I decided to take up solo skating instead. What I love most about skating is the sense of freedom it gives me. Being of Japanese descent, I've always been quite self-conscious, but skating has helped me immensely in this aspect. It has allowed me to make numerous friends and has boosted my self-confidence.

HOW LONG DO YOU SPEND SKATING ON A GIVEN DAY?

- I typically only get to skate on weekends because I work as a designer, but when I do, I spend many hours skating—often the entire day.

IS THERE ANY SKATING EXPERIENCE YOU WOULD NEVER FORGET?

- My unforgettable experience was attending roller games for the first time, where I had the opportunity to meet the skaters I admire and even compete alongside them. Despite facing health problems, I dedicated myself to being there. It was incredibly inspiring and thrilling when I achieved third place and stood on the podium alongside two skaters whom I greatly admire.

WHO ARE THE SKATERS OR PEOPLE WHO MADE YOU WHO YOU ARE?

- One of the people who has helped and supported me the most is my boyfriend, André Luiz, who is also a skater. I'm a big fan of Maeliss Conan and Florian Petticolin from France, Bohdana from Ukraine, Alena and Vanya from Russia, Dame Fall and Awa Balde from Senegal, and Gian Marco and Fran from Italy.

PERSONALLY, WHAT'S THE KEY TO EXCELLING IN THE DISCIPLINE YOU ARE GOOD AT?

- Having a lot of discipline, strengthening your body, resilience, and believing in yourself are indeed key. Mental blocks can be our biggest enemy.

WHICH COUNTRY OR CITY WOULD YOU LIKE TO VISIT THE MOST?

- I want to visit France because of my idols who inspired me a lot at the beginning of my journey. Meeting them was incredible.

IS THERE ANY PLACE YOU WOULD LIKE TO VISIT ON SKATES?

- I want to visit Mexico and Spain because there are many skaters there with incredible energy. I'm sure the roller skating tours would be unforgettable.

WHAT IS YOUR FAVORITE SKATE MODEL AT THE MOMENT, AND WHAT MAKES IT STAND OUT TO YOU?

- I love the MT line because I find it to be a light, comfortable, and versatile skate, all at a more affordable price. I can do jumps, slides, and walk on the street track with ease. Plus, the variety of colors available is amazing.

WHAT DO YOU THINK ABOUT MICRO SKATE?

- I consider the Micro family to be a real family, not just in my country. Meeting other ambassadors was an incredible experience. I love the variety of products and the diversity of people on the team. I feel very grateful and happy to be part of this family. The products have a lot of quality and are incredible for any situation.

HOW LONG DO YOU SEE YOURSELF CONTINUING TO SKATE?

- I imagine myself skating for the rest of my life. Skating makes me feel free and happy, and it definitely makes me stronger.



TOURING

VOL.01
SKATING TOUR AROUND
THE WORLD WITH


ZOJA SKUBIS

Name: ZOJA SKUBIS

Nationality: Poland

Based City: wwa & kraków

 IG: @zjaskubis

 YouTube: @zjaskubis



BY SKATING



01 TAIWAN



I LEFT MY HEART
IN TAIPEI !

02 DUBAI

A way to get a natural glow? 22 kilometers of rollerblades at 34°C and with a backpack of equipment on the back.



03

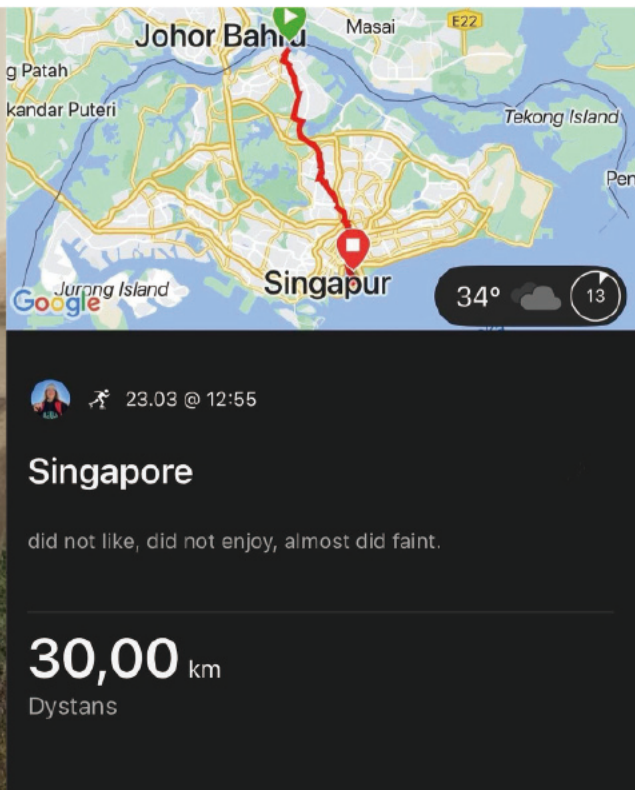
 11.03 @ 10:45

The Palm Jumeirah

кто вымыслил слово лыжворолки?

22,20 km

Dystans



SINGAPORE

Singapore! The twentieth smallest country in the world, which despite its size gave a little burn. In particular, his weather, which together with exceeding 40 degrees, colored my whole face exceptionally vivid red. Had a blast despite it all! But if some of you haven't seen how my day went yet, I'm sending you to "Around the World" episode 4 to the Reel!



04 SOUTH KOREA



m-cro



I can find myself anywhere, but I have fallen head over heels in love with Seoul. Every conversation, every coffee, every subway ride and every walk, despite being so far, felt extremely "home". I wish I could go back someday for a little longer. True, I've packed 2024 fully, but spring/summer 2025 I'm booking for Korea. See you next year beautiful city!

01. ROME, ITALY



BIMAR TECHNICAL SKATES

Is located at VIA DELLE BETULLE, 11500171-ROME. It's about a 20-minute drive from the city center, making it very convenient to reach. Micro Skate's Kids, Urban, Inline Freestyle, and Speed lines products are all available for purchase in the store.

NEARBY PLACES FOR SKATING

Villa Borghese Gardens:

A beautiful park with wide paths, ideal for inline skating. Here, you'll also find numerous garden landscapes and sculptures, allowing you to appreciate the fusion of art and nature while skating.



Lungotevere:

The banks of the Tiber River provide long stretches of flat pathways, ideal for skating while enjoying the riverside views. You can experience the unique riverside scenery of Rome while skating, and these pathways are also popular leisure spots for locals.

Pompi:

Pompi is a well-known pastry shop in Rome famous for its tiramisu. They offer various flavors of tiramisu, including classic, fruit-infused, and even a savory version. With several locations throughout the city, you can easily find one to satisfy your tiramisu cravings.



MICRO SKATE AND THE CITY

NEARBY RESTAURANT RECOMMENDATIONS:



Da Felice:

Located in the Trastevere neighborhood, Da Felice is renowned for its authentic Roman cuisine and delicious pasta dishes. Their cacio e pepe and amatriciana are particularly popular among locals and tourists alike.

NEARBY TOURISM ATTRACTIONS RECOMMENDATIONS:



Colosseum (Roman Colosseum):

Step back in time and witness the pulse of ancient Rome at the Colosseum! This awe-inspiring amphitheater hosted epic gladiatorial battles and vibrant public spectacles. Marvel at the ingenuity of Roman engineering as you explore this iconic symbol of history and power.





Pantheon (Pantheon Temple):

The Pantheon is a majestic temple dedicated to all gods, dating back to the Roman Empire era. Its impressive dome, adorned with a central oculus, remains one of the largest unreinforced concrete domes in the world.

Trevi Fountain (Trevi Fountain):

The Trevi Fountain is a stunning Baroque masterpiece and one of the most famous fountains in the world. Visitors flock to toss a coin over their shoulder into the fountain, a tradition believed to ensure a return trip to Rome.





LOJA KONCEPT

LOJA.KONCEPT is located in Jaguaré, São Paulo/SP, Brazil. The store offers a selection of Micro Skate's inline skates, providing customers with an exquisite shopping experience. Whether you're searching for urban skates, kids' skates, or high-end inline freestyle series products, LOJA.KONCEPT has something to meet your needs.

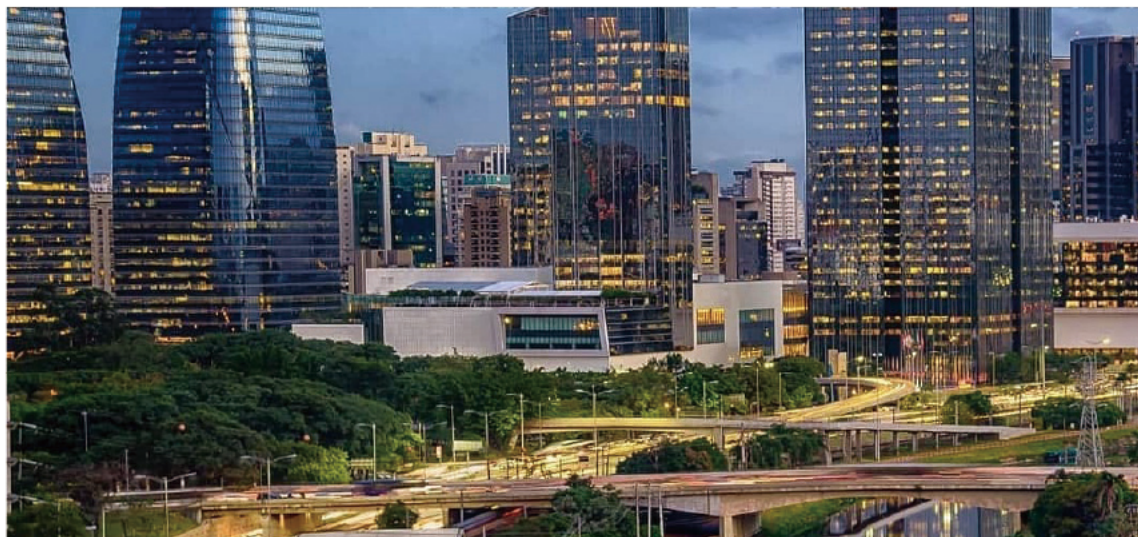
02. JAGUARÉ, SP, BRAZIL



NEARBY PLACES FOR SKATING

Villa-Lobos Park:

An ideal destination for roller skaters. The park features wide paths for casual skating and a skate park with ramps and obstacles for various skill levels.



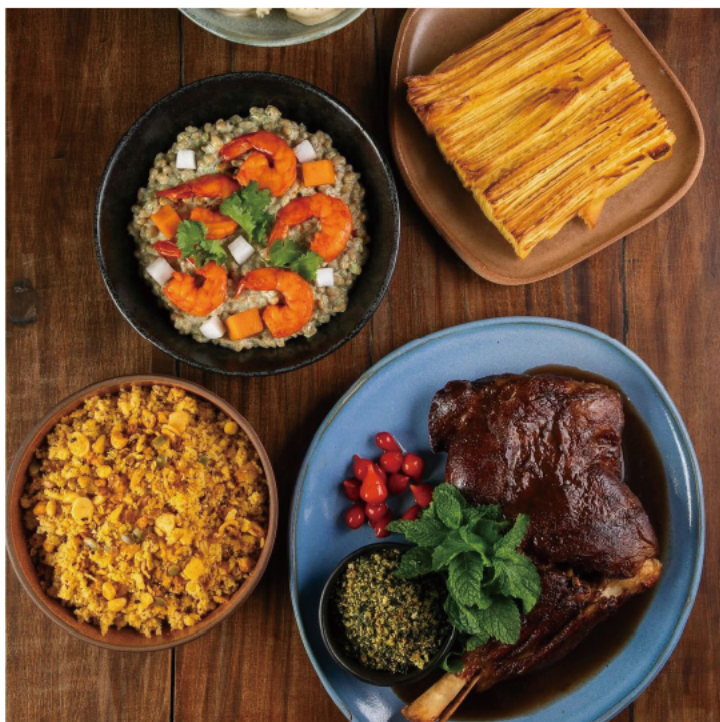
Parque do Povo:

A urban oasis offering smooth, well-maintained pathways ideal for inline skating at all levels. Enjoy the park's vibrant atmosphere, ample space for practice, and the opportunity to skate alongside joggers and cyclists in a safe, green environment.



Mocotó Restaurant e Cachaçaria:

Famous for authentic Northeastern Brazilian cuisine, Mocotó stands out with its signature mocotó (cow's foot soup) and innovative cachaça cocktails. Its warm atmosphere and unique flavors perfectly showcase Brazil's culinary traditions.



NEARBY RESTAURANT RECOMMENDATIONS



Maní:

Maní fuses Brazilian and international flavors, presenting local ingredients in innovative ways. Its refined ambiance and seasonal menu perfectly exemplify the essence of São Paulo's modern culinary culture.



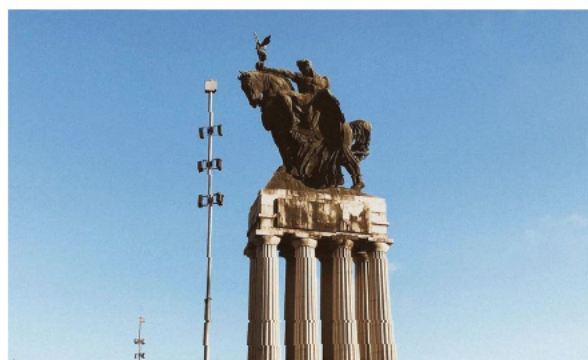
macro

NEARBY TOURISM ATTRACTIONS RECOMMENDATIONS:



Museu do Futebol:

A must-visit for football enthusiasts, offering an interactive journey through Brazil's rich soccer history. Experience the passion of Brazilian football culture and see iconic memorabilia from legendary players and matches.



Ibirapuera Park:

Imagine a place where nature and culture come together in perfect harmony. That's Ibirapuera Park in São Paulo! With its vast green spaces, serene lakes, and botanical gardens, it's the ultimate escape from the hustle and bustle of the city. And that's not all – the park also houses cultural gems like the Museum of Modern Art of São Paulo (MAM), where you can immerse yourself in the world of contemporary art.

Universidade de São Paulo (USP):

One of Latin America's most prestigious universities, boasting stunning architecture and vibrant campus life. Explore its museums, attend public lectures, or simply soak in the intellectual atmosphere of this academic landmark.





MY SETUP

VOL.01 - INLINE SKATES + ICE FRAME = WINTER

INTRODUCTION:

Meet Alena - not just a seasoned skater, but also a coach at Team Cool Skates. Over the years, she has actively participated in organizing and planning multiple roller skating events across Europe.

**SNOW AND ICE IN THE WINTER KEEP YOU FROM SKATING
IN YOUR LOCAL SPOTS?
ALENA FOUND HER SOLUTION!**



She had a ton of fun today shooting on the beautiful frozen lake at Rezidence U Jezera. The Cold Frame makes it easy to take her favorite pair of skates, such as the Micro MT4, and quickly switch them from concrete to ice! The shape of the blade perfectly mirrors the traditional full rocker setup, known and loved by all professional skaters. She particularly loves the details on these frames, like the "m-cro" logo etched into the side of the blades themselves, which are made from a single piece of extremely high-quality steel. The steel holds a superb edge, which is what you need if you want to do freestyle slalom skating on a frozen lake.

Micro Mobility Systems AG

Bahnhofstrasse 10
8700 Küsnacht
Switzerland
Phone: +41(0)44 910 11 22
info@micro.ms
www.micro-mobility.com

Mobility Sport Development & Trading(HongKong) LIMITED

Flat/rm 05, 15/f,
Workingport Commercial
Bldg 3 Hau Fook Street,
Tsim Sha Tsui, Kowloon,Hongkong
m-cro@mspport.com
www.micro-skate.com

Shanghai Mobility Sport Technology Development Co,Ltd

Room 704B, JiaXing Building
No.877 DongFang Road
PuDong, ShangHai, China
m-cro@mspport.com

 micro.skate.world

 @micro.skate

Imprint

The names, logos, and Micro Skate products are protected by copyright.

All information in this catalog is provided without warranty and supersedes content from previous years. Specifications are subject to change without notice.

Concept

Amos Pang / Co-founder and CEO

amospang@mssport.com

Sunny Qiu / Co-founder and CEO

sunnyqiu@mssport.com

Content Planning

Grace Yang / Marketing Manager

graceyang@m-croport.com

Danny Yang / Marketing Coordinator

danny@m-croport.com

Technical Content

Lily Zhang / Purchasing Manager

lily@mssport.com

Weiyuan Ou / Engineer

ou@m-croport.com

Layout & Design

Piaopiao Guo / Designer

guopiaopiao@m-croport.com

Photos

All brand ambassadors, dealers and distributors

Micro Skate would recommend wearing a helmet as well as elbow and knee pads while skating.



SKATES FOR EVERYBODY



m-cro

 [micro.skate.world](https://www.facebook.com/micro.skate.world)

 [@micro.skate](https://www.instagram.com/micro.skate)

www.micro-skate.com