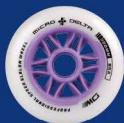




MICRO DELTA



20
26



MICRO SKATE /



SKATES FOR EVERYBODY 3 6 9 6



A STORY OF URBAN ADVENTURE

Micro Skate has won over countless people with its fantastic performance for getting around. But we've realized something more about urban skating – it's not just about getting from point A to B. Some of us crave weaving through city streets, taking in every view, while others seek the thrill of pushing their skating skills to the limit.

We're Micro Skate, and our story starts with a passion for city living and the excitement of skating. Since 1996, our mission has been simple: to make getting around more fun and flexible for everyone. We're not just about getting to work or school – we're about turning every trip into an adventure, and discovering the beauty of the city along the way.

SKATING TURNS CITY STREETS INTO A PLAYGROUND

Micro Skate isn't just a brand; it's a part of urban life. We believe skating adds a spark to city streets, giving more people the chance to explore, experience, and enjoy the city in a whole new way.

Micro Skate isn't just a way to get around; it's a lifestyle. Every pair of our skates is packed with the spirit of adventure, giving everyone who loves skating a taste of the freedom, energy, and style that comes with gliding through the city.



THE HISTORY OF MICRO SKATES

1996

Micro was established by Wim Ouboter in Zurich, Switzerland, and Micro Skate began manufacturing and selling skating products.



Founder-Wim Ouboter

2002



Micro was sold to the Chinese market, expanding skating development, while Micro Skate has simultaneously obtained international ISO, OEKO, and LGA certificates.



2004

Micro Skate has been widely promoted in the Chinese market, while simultaneously, Micro has begun international trading and become a sponsor for events in Europe.

2006

Micro organized the world's first freestyle competition in China.



2008

The Micro skate line has grown to include Speed Skate and fitness models, alongside some classic designs. Meanwhile, the Micro team has also been exploring the promotion of freestyle skating on a global scale.



2010

Micro held an open freestyle skating competition and obtained the BSCI certificate. Simultaneously, freestyle skating achieved significant success worldwide.





2014

Micro Skate earned the ASTM and TUV International certificates, establishing itself as a formidable skate brand and the preferred choice among consumers.

2017

m-cro

The new Micro Skate International Team has been officially established with the aim of introducing more creative products to the entire skate community worldwide.



2018

Micro attended the Germany ISPO and Nuremberg Toy Fair. Following these events, Micro Skate Team welcomed their first brand ambassadors, with more world-class skaters deeply involved in our product research, development, and promotion efforts.



2021

Currently, Micro Skates are sold in over 45 countries. In terms of products, we have expanded into the fitness market and now offer high-quality kids', fitness, speed, recreational, and urban skates.

2023

We continuously refine our product lines, striving to introduce high-quality new products tailored to customer needs in categories like kids, urban, and micro delta series.

2024

We successfully entered new markets, including Poland, while also introducing the innovative Firefly series—featuring the Infinite CE Firefly and MT4 Firefly with glow-in-the-dark feature.

2025

In 2025, Micro continued to push boundaries in quality and innovation. The launch of DL Pop and Delta Force 2 BK set new standards for performance and design, while the DW Inline Skate marked a breakthrough for speed slalom skaters in China. Micro was also proud to sponsor the World Inline Freestyle Championship 2025, reinforcing its commitment to advancing the sport and empowering skaters worldwide.



2026

Together, we'll keep exploring new possibilities and creating unforgettable skating experiences!



ABOUT MICRO SKATE

m-ero
INNOVATIONS SINCE 1999



**MICRO:
BORN IN SWITZERLAND**

QUALITY AND SAFETY: OUR TOP PRIORITIES

At Micro, quality and safety come first. Our products stand out for their exceptional quality and durability.

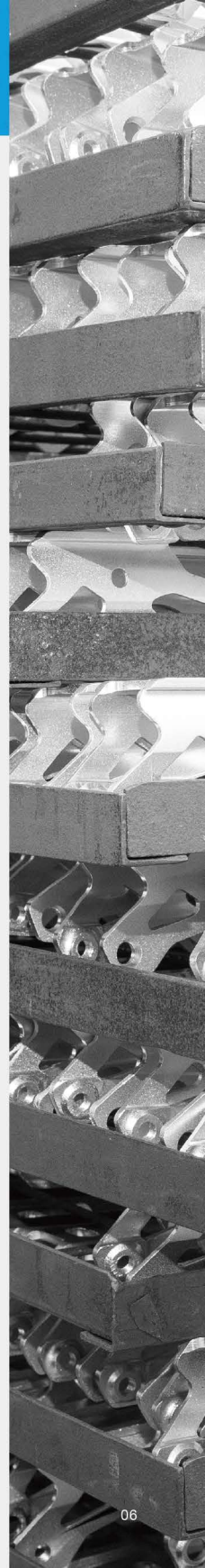
We carefully select the finest raw materials and subject our products to rigorous quality control measures.

Each phase of development and production undergoes various testing procedures to ensure compliance with both national and international safety standards, guaranteeing the highest level of excellence.

FUN FACT: OUR PRODUCTS SURVIVED A DUTCH BRIDGE ENCOUNTER!

During a family vacation in the Netherlands, tourists were amazed to see our products caught in the closing of a lifting bridge in Maastricht.

After about half an hour, when the bridge lifted again, our products emerged unscathed. It's a testament to the durability and resilience of our products!





MICRO ELECTRIC



MICRO B-BIKE



MICRO TRIKE



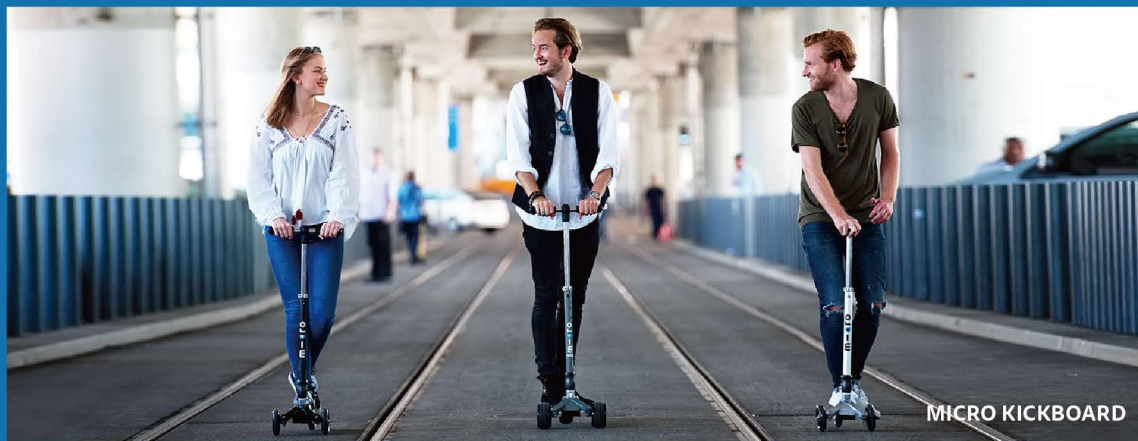
MICROLINO



SKATEBOARD



MICRO SKATE



MICRO KICKBOARD



POWERFUL PRODUCT LINES

Embracing Micro's Quality Principles, Micro Skate is dedicated to enhancing every skating experience, where quality and innovation are paramount.

BRAND STRENGTH: PRODUCTION, SALES, AND SERVICE



DECADES OF EXPERTISE

- With over **20 years** of professional experience in skate manufacturing, our team blends scientific expertise with practical know-how.

DIVERSE PRODUCT LINES

- We offer seven high-quality product lines, including Kids, Urban, Fitness, Ice, Quad, Inline Freestyle, and Speed, with over **150** product SKUs available.

GLOBAL REACH

- Micro Skate products are available in **55+ countries** worldwide, reflecting our broad international presence.

SKATES FOR EVERYBODY

COLLABORATIVE INNOVATION

- We collaborate with over **50 skilled** skaters and engineers globally to continuously innovate and maintain high-quality standards.

EXCEPTIONAL CUSTOMER SUPPORT

- With a **99% satisfaction** rate in after-sales service, we ensure our customers are supported and satisfied with their purchases.

IMPRESSIVE SALES FIGURES

- Each year, we sell over **1 million** pairs of Micro skates globally, showcasing our brand's popularity and trust.

STRINGENT QUALITY ASSURANCE

- Our products undergo rigorous testing and certification processes in countries like China, Germany, and the USA, guaranteeing adherence to national and international standards, and providing our customers with complete assurance.





OUR GOAL

We're committed to providing high-quality inline and quad skates for all skating enthusiasts, regardless of their skill level. Our mantra, **"SKATES FOR EVERYBODY,"** embodies this dedication.

Furthermore, we have ambitious goals. We aim to lead the way and set trends in the skating world, elevating skating culture to new levels. Our vision is to be the preferred brand known for innovation, style, and an unwavering passion for the sport.



OUR VALUES

UNLEASHING INNOVATION:

Join us on a journey as we push the boundaries of new technologies, design philosophies, and roller skating culture. Each skate promises an exciting adventure where innovation and surprise converge to redefine your skating experience.

SWISS PRECISION, UNMATCHED THRILLS:

Experience the pinnacle of skating pleasure as we intricately integrate Swiss quality traditions into every detail. Elevate your skating experience with our unwavering commitment to precision and excellence.

GREEN REVOLUTION:

Partner with us in leading the sustainability movement! As pioneers of ecoconsciousness, we pledge to reduce plastic waste, embrace biodegradable materials, and revolutionize product design for a greener tomorrow. Experience the joy of skating while contributing to a sustainable and vibrant future.



2023

2024

**DISCOVERY
ECO**

Kid skate



MT4 FIREFLY

Urban skate



2025

**DELTA
LIBERTY POP**

Inline Freestyle Skate



CE FIREFLY

Kid skate



2026

MT PRO

Urban skate



**DELTA SPEED
ELITE PLUS**

Speed Skate



A person wearing a light-colored sweater and dark pants is seen from behind, working on a shoe mold in a workshop. The workshop is filled with various tools, materials, and equipment, including a large table with a white cloth, a box labeled 'PAIN 15.00', and a small white box on the floor. The background shows shelves with more equipment and a window.

CRAFTING EXCELLENCE:

WHERE PRECISION MEETS QUALITY

Experience exceptional quality with our products, combining Swiss precision and craftsmanship. Every stage, from design to packaging, showcases our commitment to excellence. With over 10 meticulous processes and countless hours of craftsmanship, we guarantee our products reflect true Swiss quality.



DESIGN



CUTTING



SEWING



BOUNDING



TESTING

PLEDGING TO LEAD THE WAY

Join us in our commitment to a greener tomorrow, making skating a symbol of eco-consciousness.

By reducing plastic waste and using biodegradable materials, we place sustainability at the heart of our mission.

Our Green Revolution is more than a movement—it's a lifestyle choice reflected in every push, glide, and spin.





INTRODUCING ECO-CHIC COLLECTION

Amidst the staggering 8 million tons of plastic waste that floods our oceans yearly, Micro Skate is taking action with our green initiative.

Our Discovery Eco line repurposes discarded fishing nets, ropes, and trawls into eco-friendly products that make a difference.

But our efforts don't stop there. We're committed to setting and surpassing ambitious sustainability targets, expanding our initiatives to combat plastic pollution and safeguard our planet for the future generations.

TAKING ACTION

Guided by our dedication to protecting the planet, Micro Skate is actively fighting against plastic waste.

By reducing our reliance on plastic bag packaging, we are fulfilling our environmental duty and making significant strides toward a cleaner, more sustainable future.

OUR POINTS OF DIFFERENCE



QUALITY MATERIALS, INTERNATIONAL STANDARDS

To meet the demanded quality standards expected by international regulations, our brand utilizes high quality or environmentally friendly materials for the majority of plastic components.

ENDURING EXCELLENCE

Micro Skates aren't just products; they're durable companions crafted for performance. Our inline skates are designed with maintainable and upgradable features from the start, allowing users to easily replace worn-out parts, perform maintenance, and upgrade components as needed. This extends the product's lifespan and maintains excellent performance.



FASTER LEARNING, GREATER COMFORT

All Micro Skate products are ergonomically designed for comfort and optimal fitting, significantly reducing learning time. Additionally, beginner models feature a lower gravity design to minimize the risk of falls and alleviate fear, making it easier for beginners to learn skating quickly.



ROBUST AFTER- SALES SUPPORT

Our dedicated team is committed to addressing your concerns promptly and effectively, providing polished solutions with finesse. Whether it's mastering product functionality, maintenance, or overcoming technical challenges, rely on us for prompt and reliable support, ensuring your satisfaction every step of the way.

ADVANCING SKATING GLOBALLY WITH PURPOSE

Over the past six years, we've been dedicated to fostering the skating culture by sponsoring over 100 events in Asia and around the world, reaching 50+ cities and connecting with over 10,000 families.

Our commitment extends beyond these milestones. We're focused on shaping the global narrative of skating responsibly. By raising awareness and promoting participation, we aim to drive responsible skating projects globally and contribute to a more inclusive, sustainable, and joyful future for roller skating communities worldwide.



GIVING BACK TO SOCIETY



SKATE FOR EVERYBODY: A RECORD-BREAKING CELEBRATION IN HONG KONG

In December 2025, a large-scale Christmas Roller Skating Party unfolded in Hong Kong, bringing the skating community together in a festive and joyful atmosphere.

In collaboration with Checker Inline School and the skating community, Micro Skate was part of the Most People Dressed as Santa Claus Inline Skating in a Single-Line S-Shaped Parade and received an official Guinness World Records™ certificate.

Beyond the record, the event reflected the true spirit of roller skating, inviting families and skaters of all ages to share laughter, connection, and the joy of movement. Roller skating is a safe, welcoming, and inclusive sport — truly a way to Skate for Everybody.



ADVOCATING FOR A HEALTHIER LIFESTYLE

Skating is more than just a sport; it's a powerful aerobic exercise that promotes physical activity and well-being.

Our efforts aim to inform individuals about the numerous benefits of skating, encouraging a shift from screens to outdoor experiences and fostering meaningful connections with friends and family. Skating enhances physical balance and coordination, while also fostering self-confidence, resilience, and immunity. It's a journey toward a healthier, more balanced lifestyle, promoting personal growth and stronger interpersonal connections. We envision a future where the joy of skating seamlessly integrates with a life of well-being and happiness.





CHAMPIONING SOCIAL RESPONSIBILITY

In addition to promoting skating, we're committed to philanthropy. We believe in the power of giving back.

Around the world, there are families and children who miss out on the joy of skating due to various circumstances.

Aligned with our brand philosophy, we're dedicated to providing FREE skate equipment to schools, families, or children in need, ensuring everyone has the opportunity to enjoy the sport.

With our capabilities, we aim to create a positive impact and make "skates for everybody" a reality, regardless of circumstances.



Micro

MICRO TEAM MEMBERS



WIM OUBOTER

FOUNDER OF MICRO BRAND

MICRO Skates has been at the forefront of both Scooters and Skates, with our Development and Engineering Team dedicated to constant improvement and innovation. Our goal is to deliver nothing short of the best products, designed to delight you.

Thank you for choosing the original! Have a safe ride and enjoy mobility and sport.



PASCAL JOOS

CO-FOUNDER OF MICRO SKATE COMPANY

Our products are characterized by exceptionally high quality and longevity. We meticulously select materials, and at every stage of development and production, each new product undergoes rigorous quality control through various tests. This ensures that all requirements of national and international safety standards are met, guaranteeing a product of utmost reliability and performance.



AMOS PANG

CO-FOUNDER AND CEO
OF MICRO SKATE COMPANY

MICRO Skates stands as a prominent global hub for skate equipment, established in 2016. Founded by individuals with a deep-seated passion and expertise in roller skating, the brand has consistently adhered to an unwavering commitment to craftsmanship and an artisanal approach to design and production. These core values permeate every aspect of the company's endeavors, evident as it expands, goes international, and creates cutting-edge products that resonate with the desires of skaters.



SUNNY QIU

CO-FOUNDER AND CEO
OF MICRO SKATE COMPANY

In addition to crafting exceptional products, MICRO Skates fosters a joyful and passionate sporting environment, ensuring that people can have fun whenever they skate. We appreciate your choice of MICRO Skates, and your support is instrumental in making skating an even more enjoyable and thriving sport.



GEORGE KARPIS

TEAM MANAGER OF INLINE FREESTYLE
EUROPEAN SALES MANAGER

As Team Manager at MICRO Skates, I extend a warm welcome to all skaters who share a love for the sport. If you seek support from MICRO, please don't hesitate to reach out!

Additionally, I've taken on the role of Sales Manager for Europe to better meet the needs of our European market. I'm excited to serve you in both capacities and look forward to helping MICRO Skates continue to grow throughout the region. Let's do it!

MICRO'S WORLDWIDE DISPLAY AND DISTRIBUTION



GLOBAL DISTRIBUTION MAP

- | | | | |
|-------------|-------------|---------------|-------------|
| ○ CANADA | ○ UAE | ○ UK | ○ POLAND |
| ○ USA | ○ BRAZIL | ○ BELGIEN | ○ ITALY |
| ○ MEXICO | ○ CHILE | ○ NETHERLANDS | ○ BIH |
| ○ COSTA RIC | ○ ARGENTINA | ○ SWITZERLAND | ○ ESTONIA |
| ○ PANAMA | ○ PORTUGAL | ○ GERMANY | ○ LITHUANIA |
| ○ DRC | ○ SPAIN | ○ PERU | ○ BELARUS |



- | | | | | | |
|-----------|----------------|----------------|------------|---------------|--------------------|
| ○ UKRAINE | ○ ARMENIA | ○ KYRGYZSTAN | ○ KOREA | ○ AUSTRALIA | ○ PHILIPPINES |
| ○ MDA | ○ IRAQ | ○ SOUTH AFRICA | ○ JAPAN | ○ MALAYSIA | ○ HONG KONG, CHINA |
| ○ RUSSIA | ○ SAUDI ARABIA | ○ KAZAKHSTAN | ○ VIETNAM | ○ NEW ZEALAND | ○ TAIWAN, CHINA |
| ○ CYPRUS | ○ IRAN | ○ INDIA | ○ COLOMBIA | ○ SINGAPORE | ○ EL SALVADOR |
| ○ LEBANON | ○ PAKISTAN | ○ MALDIVES | ○ ECUADOR | ○ INDONESIA | ○ NIGERIA |
| ○ ISRAEL | ○ EGYPT | ○ CHINA | ○ THAILAND | ○ BRUNEI | |

A large, modern exhibition stand for Micro Skate. It features a large, pixelated world map on its curved back wall. Several white, bird-like shelves are mounted on the map, each holding a pair of roller skates. The stand is topped with two oval signs, each displaying the 'm-cro' logo. In the foreground, a white table with thick, geometric legs holds various items, including a small 'm-cro' branded box and some brochures. The entire stand is set against a blue background.

m-cro

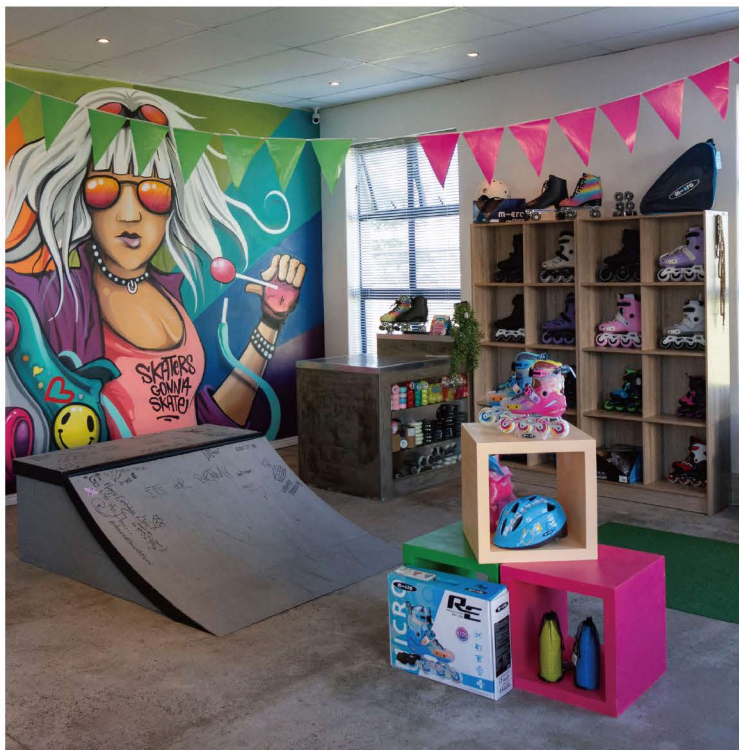
m-cro

Micro Skate's premium products are available in over 50 countries.

Our dedicated global partners actively champion our vision and promote the Micro concept, ensuring alignment with market demands at every sales opportunity.

We're proud of the unwavering commitment and enthusiasm shown by all our partners, who consistently embody Micro Skate as a brand synonymous with innovation and vitality.

**A HEARTFELT THANK YOU
TO ALL MICRO SKATE PARTNERS!**



MICRO SKATE

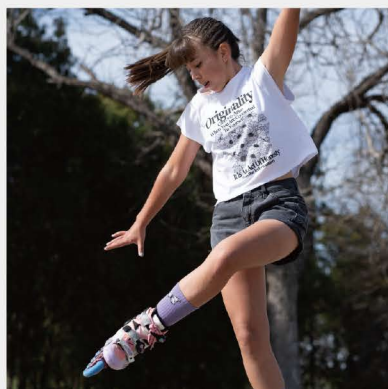


m-cro

MICRO BRAND AMBASSADORS & COMMUNITY

In line with Micro Skate's vision of "Skates For Everybody," we aim to empower every individual interested in exploring or advancing in skating through our products. However, achieving our vision is closely linked to our many brand ambassadors and the vibrant community that surrounds us. Our ambassador team and community continue to grow, with over 22,000 fans worldwide using the #microskates hashtag to share their Micro skating journey.

m-cro







KIDS

Similar to our iconic scooters, Micro Skate's Kids Inline Skates have become an essential part of childhood for countless youngsters globally. From skating to kindergarten to enjoying leisure time outdoors, our products have remained trusted companions for years.

Renowned for their exceptional quality and durability, our children's inline skates are more than just sources of joy. They actively contribute to improving children's balance and coordination, encouraging outdoor activity, and promoting healthier lifestyles.

We are proud to have brought smiles to the faces of millions of children and parents with our skates.

Future

■ Lock shield system, make walk anywhere, skating everywhere

● - MIS-FUTURE-BL

● - MIS-FUTURE-PLM

DRAWABLE LINER

QUICK BUCKLE-UP SYSTEM

Easy for kids to put on themselves

LOCK SHIELD SYSTEM

Learn to walk first with our wheel-locking system

4-SIZE ADJUSTABILITY

Allows children to grow and continue using skates

SPEED-CONTROL

Adjust the wheel speed by loosening or tightening the tension until it feels comfortable for free rolling

LIGHT-UP LED WHEELS

INTEGRATED BOOT-FRAME SYSTEM

Made from polypropylene helps prevent twisting

FLASH
Flash-Moving



Age / 3-12 years old



Max weight / 50kg



Size / #23-26 #27-30 #31-34



BRAKE

Adjustable rear brake



BEARINGS

ABEC5



WHEELS

80A flat profile



WHEELS *23-30: 3x56mm / *31-34: 4x56mm

Cosmo

■ Stay cool, stay breathable



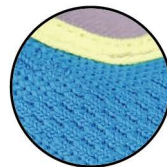
- MIS-COSMO(S70)-BL



- MIS-COSMO(S70)-PUR

FULL COVER POWER CUFF

Crafted from high-resistance polypropylene, providing robust support



EXCELLENT BREATHABILITY

provided by the authentic microfiber material

ADJUSTABLE ANGLE BRAKE PAD

4-SIZE ADJUSTABLE

Allows children to grow and continue using skates



Light weight



Age / 3-18 years old



Max weight / 100kg



Size / #23-26 #27-30 #31-34 #35-38



LOCKING

Safety lock buckle and 45 degree hook and loop ankle strap



SHELL

High resistant polypropylene



WHEELS

80A polyurethane wheels



BEARINGS

ABEC5



FRAME

Integrated polypropylene



BRAKE

Adjustable and detachable rear brake



WHEELS * 23-26: 4x58mm / * 27-38: 4x70mm

Joy

- A semi-soft skate revolution:
Lightweight but extremely supportive

○ - MIS-JOY-BL/WH

● - MIS-JOY-BL/PK

FULL COVER POWER CUFF

Crafted from high-resistance polypropylene, providing robust support

EASY LOCK LACE SYSTEM

DURABLE AND BREATHABLE SEMI-SOFT UPPER

ERGOPILLAR UPPER DESIGN: SAFETY MEETS COMFORT

Light weight



INTEGRATED BOOT-FRAME SYSTEM

Made from polypropylene helps prevent twisting

4-SIZE ADJUSTABILITY

Allows children to grow and continue using skates



Age / 3-18 years old



Max weight / 100kg



Size / #25-28 #29-32 #33-36 #37-40



LOCKING

Safety buckle and 45 degree hook and loop ankle strap



SHELL

High resistant polypropylene



WHEELS

80A polyurethane wheels



BEARINGS

ABEC5



FRAME

Integrated polypropylene



BRAKE

Adjustable and detachable rear brake



WHEELS *25-28: 4x58mm / *29-40: 4x70mm

Discovery

■ 360° safeguard best-selling hard boot skates

● - MIS-DIS-PK

● - MIS-DIS-BK

HIGH RESISTANT POLYPROPYLENE HARD CUFF AND SHELL

Provides stronger support and protection

FAST BUCKLE-UP SYSTEM

Easy to put on and take off

SHOCK ABSORBER



360 Armor



HIGH QUALITY CNC ALUMINIUM FRAME

4-SIZE ADJUSTABLE

Allows children to grow and continue using skates



Age / 5-18 years old



Max weight / 100kg



Size / #29-32 #33-36 #37-40



LOCKING

Safety lock buckle and 45 degree hook and loop ankle strap



LINER

Well padded memory fitted expendable liner



WHEELS

Round profile
85A Polyurethane Wheels



BEARINGS

ABEC7



BRAKE

Adjustable and detachable rear brake



WHEELS * 29-32: 2x64mm + 2x62mm / * 33-36: 2x70mm + 2x68mm / * 37-40: 2x72mm + 2x70mm

New Shaper

■ Extremely ventilated skates with 3D air-permeable material

● - MIS-NS3-PUR

● - MIS-NS3-BL

● - MIS-NS3-BK



Age / 3-18 years old



Max weight / 100kg



Size / #25-28 #29-32 #33-36 #37-40



CUFF

High resistant polypropylene



SHELL

High resistant polypropylene



WHEELS

80A polyurethane wheels



BEARINGS

ABEC5



BRAKE

Adjustable and detachable rear brake



WHEELS * 25-28: 4x58mm / * 29-40: 4x70mm

Discovery Eco

● - MIS-DIS-ECO

- 360° safeguard hard boot skates made with recycled plastic components



Age / 5-18 years old



Max weight / 100kg



Size / #29-32 #33-36 #37-40



CUFF

High resistant polypropylene



LOCKING

Safety lock buckle and 45 degree hook and loop ankle strap



WHEELS

Round profile
85A polyurethane wheels



BEARINGS

ABEC7



BRAKE

Adjustable and detachable rear brake

8 MILLION

Tonnes of plastic waste are entering
the world's oceans every year

MARINE PLASTIC POLLUTION

Has impacted at least 267 species worldwide

11%

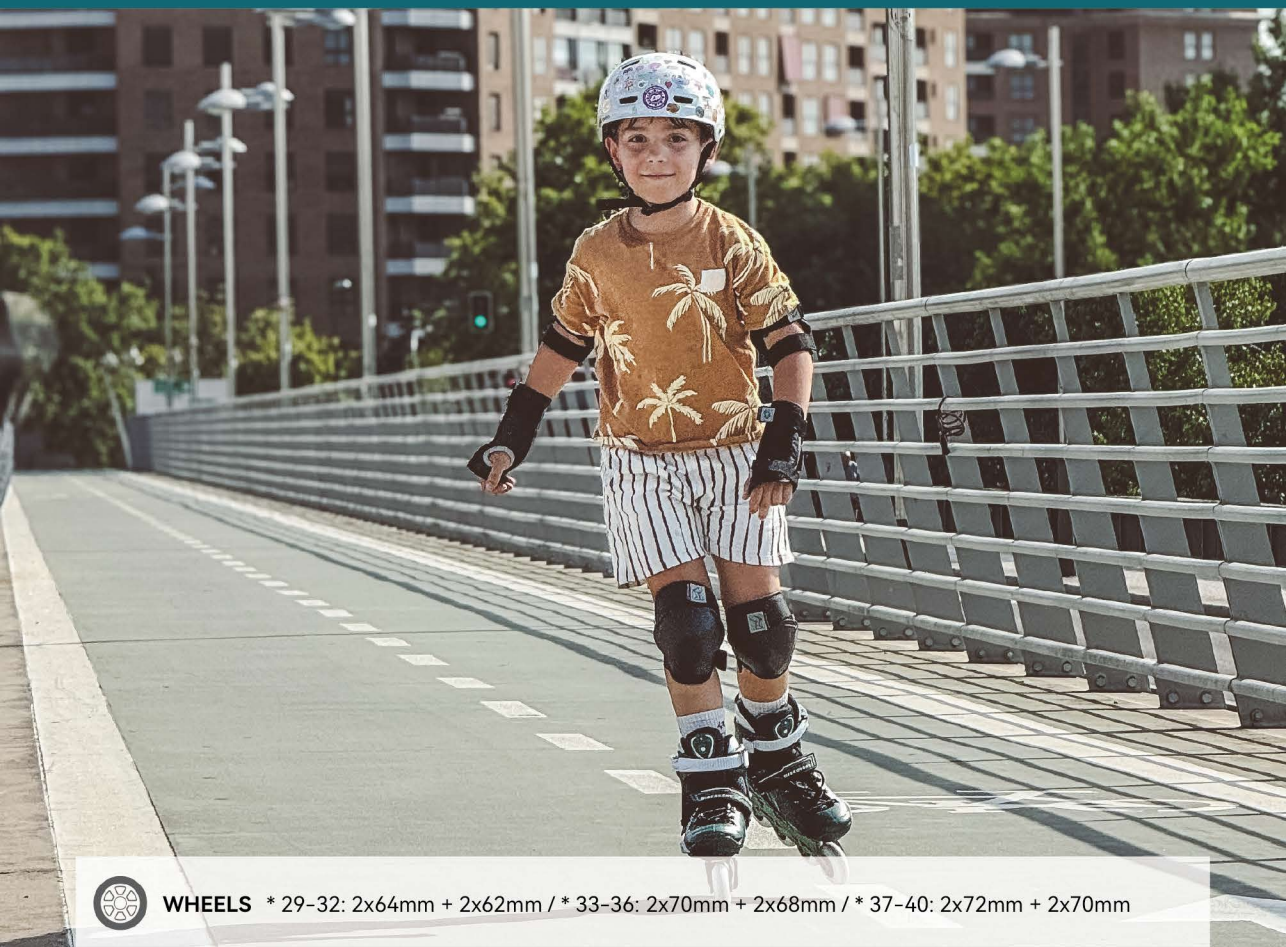
Of it stems from the maritime industry

WE RECYCLE

Fishing nets, ropes, and trawls into
DISCOVERY ECO

BENEFITS

- Reducing the waste
- Save depleting landfill space
- Reducing energy consumption
- Reduction in greenhouse gas emissions



WHEELS * 29-32: 2x64mm + 2x62mm / * 33-36: 2x70mm + 2x68mm / * 37-40: 2x72mm + 2x70mm

Infinite

Visible keeps the safe in the night

○ - MIS-S7-WH

● - MIS-S7-BK



Age / 5-18 years old



Max weight / 100kg



Size / #29-32 #33-36 #37-40



CUFF

High resistant polypropylene



LOCKING

Safety lock buckle and 45 degree ankle ratchet buckle



SHELL

High resistant polypropylene



FRAME

CNC aluminium frame with high quality



BRAKE

Adjustable and detachable rear brake



WHEELS

Round profile 85A polyurethane wheels



BEARINGS

ABEC7



WHEELS * 29-32: 2x64mm + 2x62mm / * 33-36: 2x70mm + 2x68mm / * 37-40: 2x72mm + 2x70mm

Infinite LE

■ Eye-catching with colorful miami style

● - MIS-LE-BL

● - MIS-LE-PK

HIGH RESISTANT POLYPROPYLENE HARD CUFF AND SHELL

Provides stronger support and protection

MEMORY-FITTED LINER

Removable and washable

NO-TIE LOCK

Convenient lace fastening solution

SHOCK ABSORBER

4-SIZE ADJUSTABILITY

BRAKE

Adjustable and detachable rear brake



Age / 5-18 years old



Max weight / 100kg



Size / #29-32 #33-36 #37-40



FRAME

6000 series CNC aluminium



WHEELS

Round profile
85A polyurethane wheels



BEARINGS

ABEC7



WHEELS * 29-32: 2x64mm + 2x62mm / * 33-36: 2x70mm + 2x68mm / * 37-40: 2x72mm + 2x70mm

Infinite CE Firefly

■ Family-friendly firefly skates: glowing nighttime adventures together

○ - MIS-CE FFY-BL

● - MIS-CE FFY-YL



Age / 3-18 years old



Max weight / 100kg



Size / #28-31 #30-33 #34-37 #37-40



CUFF

High resistant polypropylene



LOCKING

Safety lock buckle and 45-degree ankle ratchet buckle



FRAME

CNC aluminium frame with high quality



BEARINGS

ABEC7



WHEELS

82A flash wheels



WHEELS

* 28-31: 2x60mm+2x62mm / * 30-33: 2x62mm+2x64mm

* 34-37: 2x68mm+2x70mm / * 37-40: 2x70mm+2x72mm

Infinite CE

■ One skate, enjoy two setups

- - MIS-CE-BL
- - MIS-CE-GR
- - MIS-CE-PK



Age / 3-18 years old



Max weight / 100kg



Size / #28-31 #30-33 #34-37 #37-40



CUFF

High resistant polypropylene



LOCKING

Safety lock buckle and 45-degree ankle ratchet buckle



SHELL

High resistant polypropylene



LINER

Well padded memory fitted expendable liner



FRAME

CNC aluminium frame with high quality



WHEELS

Round profile 85A polyurethane wheels



BEARINGS

ABEC7

FITNESS SET-UP



70mm

68mm

68mm

70mm

SLALOM SET-UP



68mm

70mm

70mm

68mm



WHEELS

* 28-31: 2x60mm+2x62mm / * 30-33: 2x62mm+2x64mm

* 34-37: 2x68mm+2x70mm / * 37-40: 2x70mm+2x72mm

Infinite 3

○ - MIS-INFINITE 3-WH

■ BIG wheels skate for KID



Age / 5-18 years old



Max weight / 100kg



Size / #28-31 #30-33 #34-37 #37-40



CUFF

High resistant polypropylene



LOCKING

Safety buckle and
45 degree ankle ratchet buckle



SHELL

High resistant polypropylene



LINER

Well padded memory
fitted expendable liner



FRAME

6000 series high quality aluminium



WHEELS

Round profile
85A polyurethane wheels



BEARINGS

ABEC7



WHEELS * 28-31: 3x76mm / * 30-33: 3x80mm / * 34-37: 3x84mm / * 37-40: 3x90mm

Champion

■ All-in-one semi-soft skate

● - MIS-S9- OR

● - MIS-S9- BL



FAST- TRACK LACING SYSTEM

Easily lacing and tightly fasten

DUAL DENSITY CUFF

GREAT AIR PERMEABILITY SEMI-SOFT UPPER

4-SIZE ADJUSTABLE

FREE SWITCH SYSTEM

Easily switch between fitness and slalom models
utilizes an eccentric axle screw for quick adjustments



Age / 3-18 years old



Max weight / 100kg



Size / #29-32 #33-36 #37-40



LOCKING

Safety buckle and
45 degree ankle ratchet buckle



SHELL

High resistant polypropylene



WHEELS

Round profile
80A polyurethane wheels



BEARINGS

ABEC5



FRAME

6000 series high quality aluminium



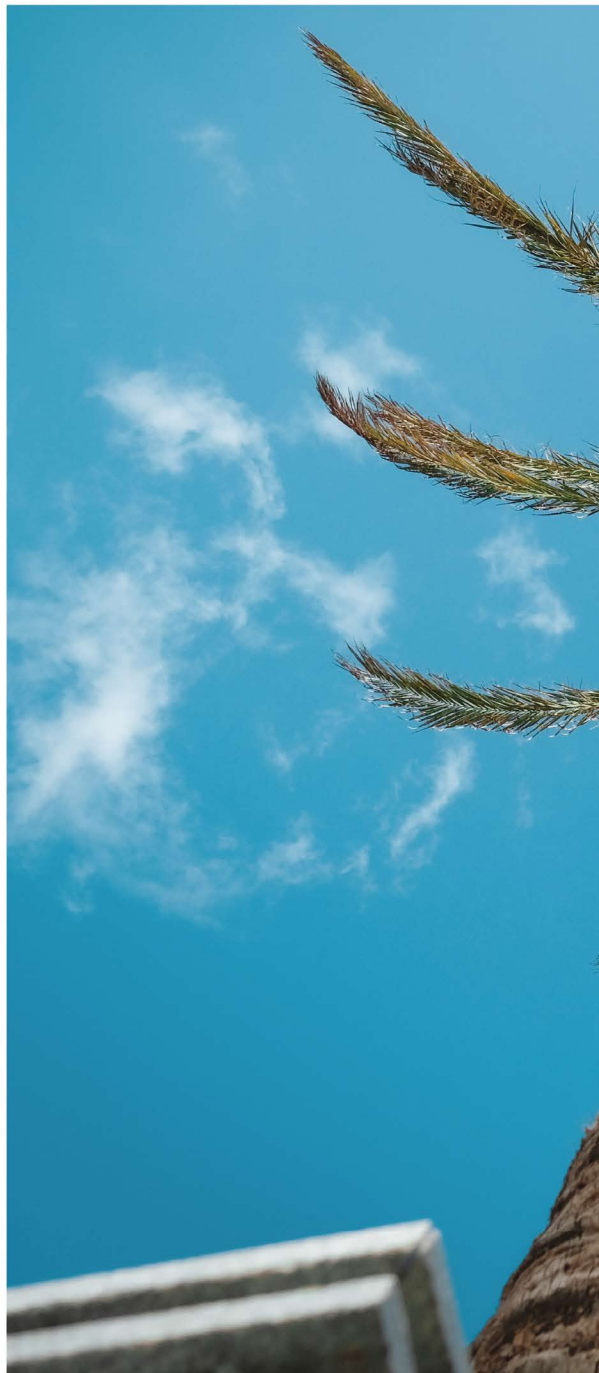
WHEELS * 29-32: 4x68mm / * 33-36: 4x72mm / *37-40: 4x76mm

URBAN /

Our urban inline skates go beyond leisure—they're your key to exploring the city.

Whether you're cruising through busy streets, running errands, or meeting friends for coffee, our skates seamlessly blend work and play. They effortlessly take you from home to the bus stop or from the transit hub to the office. No matter the occasion, our urban inline skates adapt to city life with ease.

To ensure we meet everyone's needs, we've worked with skaters worldwide to develop our Urban series. While preferences vary, our Urban products always offer durability, a great fit, and timeless style.



SKATES FOR EVERYBODY



m-cro

MT Plus

■ Budget + perfect fit + fast learning= most popular skate



**PROVIDES AIR FLOW AND
KEEP THE FOOT DRY**

From side and bottom vents

THICK MEMORY FIT LINER

Removable and washable

**WIDE BODY CONSTRUCTION
GUARANTEES A PERFECT FIT**

High resistant polypropylene shell

SLIDE PAD

Safeguard against scratches



SHOCK-ABSORBING PAD

For enhanced comfort and protection



Age / 12 years old above



Max weight / 150kg



Size / #36-47



CUFF

High resistant polypropylene



LOCKING

Safety lock buckle and
45 degree ratchet ankle buckle



WHEELS

85A round profile
polyurethane wheels



BEARINGS

ABEC7



FRAME

6000 series high quality aluminium



○ - MIS-MT-PLUS-CR



○ - MIS-MT-PLUS-EMD



○ - MIS-MT-PLUS-VT



○ - MIS-MT-PLUS-SAND



○ - MIS-MT-PLUS-BK



○ - MIS-MT-PLUS-YL



WHEELS * 36-38: 4x76mm / * 39-42: 4x80mm / * 43-47: 4x90mm

MT Pro

■ Fit. Control. Precision

HIGH-QUALITY VENTILATION DELUXE LINER

Fresh comfort that breathes with you



3D FOOTBED

Shaped for natural support and a locked-in fit

STIFFER PP SHELL

Stronger structure. Confident ankle support

HIGH REBOUND POLYURETHANE WHEELS

SOLID FRAME, MAXIMUM POWER TRANSFER

Tougher build with smoother, steadier ride feel



Age / 12 years old above



Max weight / 150kg



Size / #36-47



CUFF

High-resistant polypropylene cuff



LOCKING

Top memory lock buckle
and 45-degree ratchet ankle buckle



WHEELS

84A round profile
high-rebound PU wheels



BEARINGS

Twincam ILQ 7 bearings



FRAME

High-quality aluminum frame



○ - MIS-MT PRO-SAND



○ - MIS-MT PRO-BK



○ - MIS-MT PRO-PK



WHEELS * 36-38: 4x76mm / * 39-42: 4x80mm / * 43-47: 4x90mm

MT 3

- Bigger wheels, easier to glide

- - MIS-MT3-CR
- - MIS-MT3-EMD
- - MIS-MT3-BK

THICKEN MEMORY FIT LINER

Features heel lock design for added stability

HIGH-RESISTANT POLYPROPYLENE SHELL

WIDE BODY CONSTRUCTION ENSURES AN IMPECCABLE FIT

SHOCK-ABSORBING PAD

For enhanced comfort

SLIDE PAD

Easily replaceable

SUPER HIGH REBOUND POLYURETHANE BIG WHEELS

85A round profile, 100/110mm

SIDE AND BOTTOM VENTS

Promote airflow



Age / 12 years old above



Max weight / 150kg



Size / #34-36 #37-38 #39-40 #41-42 #43-44 #44-45 #46-47



CUFF

High resistant polypropylene



LOCKING

Durable safety lock buckle and 45-degree power strap



WHEELS

85A super high rebound wheels



BEARINGS

ABEC7



FRAME

6000 series high quality aluminium
(3 wheels setting)



WHEELS * 34-40: 3x100mm / * 41-47: 3x110mm

MT 4 Firefly

■ Glowing skates: safe, durable, comfortable nighttime skating

● - MIS-MT4 FFY-YL

● - MIS-MT4 FFY-BL

THICKENED MEMORY FIT LINER

Offers paramount Comfort

GLOW-IN-THE-DARK POLYPROPYLENE SHELL

Stays visible and safe

HIGH-RESISTANT WIDE BODY CONSTRUCTION

maximum durability

SHOCK- ABSORBING PAD

HIGH REBOUND FLASH WHEELS

Shines brightly without batteries

SIDE PAD



Age / 12 years old above



Max weight / 150kg



Size / #34-36 #37-38 #39-40 # 41-42 #43-44 #44-45 #46-47



CUFF

High resistant polypropylene



LOCKING

Safety lock buckle and 45-degree ratchet ankle buckle



WHEELS

Round profile 85A polyurethane wheels



BEARINGS

ABEC7



FRAME

Casted aluminium frame



WHEELS *34-38: 4x76mm / *39-47: 4x80mm

MT 4

■ Affordable in the price, fresh in the colors

○ - MIS- MT4 LAVA

● - MIS-MT4-PK

**THICKEN MEMORY FIT LINER
WITH DUAL SIZING**

**WIDE BODY CONSTRUCTION
ENSURES AN IDEAL FIT**

**HIGH-RESISTANT POLYPROPYLENE
SHELL FOR DURABILITY**

SIDE AND BOTTOM VENTS
Keeping feet dry and comfortable

SHOCK-ABSORBING PAD
For added comfort

**A SLIDE PAD FOR
SCRATCH PROTECTION**



Age / 12 years old above



Max weight / 150kg



Size / #34-36 #37-38 #39-40 # 41-42 #43-44 #44-45 #46-47



CUFF

High resistant polypropylene



LOCKING

Top safety buckle
And 45 degree power strap



WHEELS

Round profile
85A polyurethane wheels



BEARINGS

ABEC5



FRAME

Casted aluminium frame



WHEELS *34-38: 4x76mm / *39-47: 4x80mm

MT4 FLASH

○ - MIS-MT4 FLASH

■ Cruising in the night, lighting the street

**THICKEN MEMORY FIT LINER
WITH DUAL SIZING**

Heel lock design

**HIGH-RESISTANT
POLYPROPYLENE HOLLOW SHELL**

**SIDE AND BOTTOM VENTS
PROMOTE AIRFLOW**

Ensuring dry and comfortable feet

**SLIDE PAD FOR
SCRATCH PROTECTION**

SHOCK-ABSORBING PAD

FLASH LED LIGHTING HIGH REBOUND WHEELS

For added visibility and style

FLASH
Flash-Moving



Age / 12 years old above



Max weight / 150kg



Size / #34-36 #37-38 #39-40 #41-42 #43-44 #44-45 #46-47



CUFF

High resistant polypropylene



LOCKING

Top safety buckle and
45 degree power strap



WHEELS

85A round profile polyurethane
flash wheels



BEARINGS

ABEC5



FRAME

Casted aluminium frame



WHEELS * 34-38 : 4x76mm / * 39-47 : 4x80mm

New Super

● - MIS-SUPER-BK

■ Intense skating made effortless - Slide & Slalom

UNPARALLELED MANEUVERABILITY AND STURDY SUPPORT

High-resistant polypropylene base and cuff

SECURE HEEL LOCK

With the safety shin buckle and
45-degree ratchet strap

A SNUG FIT WITH ADDED RAIN PROTECTION

High-quality composition of leather upper

LARGER REMOVABLE SIDE PROTECTOR

Shielding the boot from scuffing



Age / 12 years old above



Max weight / 150kg



Size / #37-38 #39-40 #41-42 #43-44



LOCKING

Safety lock buckle, 45 degree ratchet ankle
buckle and hook & loop toe strap



LINER

Extension liner



WHEELS

85A round profile
polyurethane wheels



BEARINGS

Slalom pro9



FRAME

6000 series high quality aluminium



WHEELS * 37-38: 4x76mm / * 39-40/41-42/43-44: 4x80mm

Super 3

● - MIS-SUPER 3-BK

■ Born from the urban skating movement

EXCEPTIONAL MANEUVERABILITY AND SOLID SUPPORT

With the high-resistant
polypropylene base and cuff

COMFORTABLE, SNUG FIT WITH ADDED RAIN PROTECTION

High quality composition leather upper

LARGER REMOVABLE SIDE PROTECTOR

To shield the boot from scuffing

3-WHEELED MILO TRISKATE FRAME

For enhanced agility



Age / 12 years old above



Max weight / 150kg



Size / #37-38 #39-40 #41-42 #43-44



CUFF

High resistant polypropylene



LOCKING

Safety lock buckle and
45-degree ratchet ankle buckle



WHEELS

85A super
high rebound wheels



BEARINGS

Slalom pro9



FRAME

6000 series high quality aluminium



WHEELS * 37-40: 3x100mm / * 41-44: 3x110mm

■ Unleash your potential with the exceptional 3-wheel urban skate

REPLACEABLE SHADOW GUARD LINER CUFF

Could enhance ankle support

REMOVABLE, WASHABLE, AND COMFORTABLE LINER

HIGH-RESISTANT POLYPROPYLENE BASE AND CUFF

For maximum durability and support

ANTI-SLIP PROTECTOR

UNRIVALED COMFORT WITH A SUPER COMFORTABLE MICROFIBER UPPER

Water-repellent to tackle any weather conditions

DISPATCHABLE SHOCK-ABSORBING PAD

Ensuring comfort and safety in skating

RIDE SMOOTHLY WITH 110MM/110MM SUPER HIGH REBOUND BIG WHEELS



Age / 12 years old above



Max weight / 150kg



Size / #35-36 #37-38 #39-40 #41-42 #43-44



CUFF

High resistant polypropylene



LOCKING

Safety lock buckle and
45-degree power strap



WHEELS

85A super
high rebound wheels



BEARINGS

ABEC9



FRAME

Premium 3-wheel milo frame



WHEELS * 35-40: 3×100mm / * 41-44: 3×110mm

FITNESS

Designed with an emphasis on comfort, support, and performance, our fitness skates are ideal for prolonged sessions and a diverse range of skating endeavors.

Whether you're leisurely cruising along scenic routes, challenging yourself with interval training, or participating in group fitness sessions, our fitness inline skates provide stability and responsiveness necessary for a fulfilling workout experience.

Mood

● - MIS-MOOD-BK

■ Get started on your fitness journey effortlessly!

**SUPERIOR STABILITY
WITH THE DUAL DENSITY CUFF**

FAST-TRACK LACING SYSTEM

Say goodbye to traditional lacing

TOP-GRADE SEMI-SOFT UPPER

Designed for ventilation to keep you cool

**CUSTOMIZE YOUR RIDE WITH
THE ANGLE-ADJUSTABLE BRAKE PAD**

**ROLL SMOOTHLY WITH
SUPER HIGH REBOUND WHEELS**



Age / 12 years old above



Max weight / 150kg



Size / #38-46



LOCKING

Safety lock buckle and
45 degree ratchet ankle strap



SHELL

High resistant polypropylene



WHEELS

83A polyurethane wheels



BEARINGS

ABEC7



FRAME

High quality aluminium frame



WHEELS * 38-40: 4x84mm / * 41-46 : 4x90mm



ICE

With our extensive experience in inline skate production, we've introduced a specialized line of ice skates crafted to deliver top-notch quality for ice skating enthusiasts. Our ice skates are carefully engineered to offer unmatched stability, precise control, and effortless agility on the ice, enabling skaters to fully enjoy the thrill of gliding across frozen surfaces.



Zero Plus

- Adjustable ice skates designed for novice kids taking their first steps on the ice

- - MIS-ZERO PLUS-PUR
- - MIS-ZERO PLUS-PK
- - MIS-ZERO PLUS-BL



Age / 3-18 years old



Max weight / 100kg



Size / #29-32 #33-36 #37-40



CUFF

High resistant polypropylene



LOCKING

Safety lock buckle and 45 degree hook and loop ankle strap



LINER

Warm insulated fleece liner



Zero Pro

■ Superior fit, unwavering stability

○ - MIS-ZERO PRO-WH

● - MIS-ZERO PRO-BK

ENHANCED SUPPORT AND DURABILITY

Thanks to the strong shell construction



Age / 8 years old above



Max weight / 150kg



Size / White: #36 #37 #38 #39 #40

Black: #41 #42 #43 #44 #45



CUFF

High resistant polypropylene



LOCKING

Safety shin buckle and
45 degree hook and loop ankle strap





QUAD

Roller skating is a beloved classic activity, cherished by many. At Micro Skate, we're excited to offer a diverse range of quad roller skates suitable for both indoor and outdoor use. Featuring unique designs, superior fit, and durability, our skates guarantee a stylish and comfortable experience. Additionally, our adjustable children's skates make it easy for kids to join in on the fun.

Twilight

■ Stand out in the crowd with the captivating holographic colorway

● - MRS - TL- IRID

● - MRS-TL-IRID (ADJ.)

MESMERIZING HOLOGRAPHIC FABRIC

For style and durability

PREMIUM MEMORY AND FITTING FOAM

SECURE FIT WITH METAL SPEED LACE EYELETS



TWILIGHT ADJ.



TWILIGHT

ALUMINIUM ALLOY TRUCKS AND BASEPLATE

Stability and maneuverability

SMOOTH RIDE ON 58MM URETHANE FLASH WHEELS



Age / 12 years old above



Age / (Adj.) 6 years old above



Max weight / 150kg



Size / #35-44



Size / (Adj.) #31-34 #35-38 #39-42



UPPER
TPU



PLATE
6000 series high quality aluminium



BEARINGS
ABEC7





WHEELS *4x58mm flash wheels

Umbra

■ Classic black meets vegan-friendly

● - MRS-UB-BK

● - MRS-UB-BK (ADJ.)

PREMIUM MEMORY AND FITTING FOAM

For personalized comfort

METAL SPEED LACE EYELETS

For durability and easy lacing



UMBRA ADJ.



UMBRA



ALUMINIUM ALLOY PLATE

Ensure agility and long-lasting performance

FLASH WHEELS

58mm diameter, 85A durometer for a smooth ride



Age / 12 years old above



Age / (Adj.) 6 years old above



Max weight / 150kg



Size / #35-46



Size / (Adj.) #31-34 #35-38 #39-42



UPPER

Micro fiber leather



PLATE

6000 series high quality aluminium



BEARINGS

ABEC7



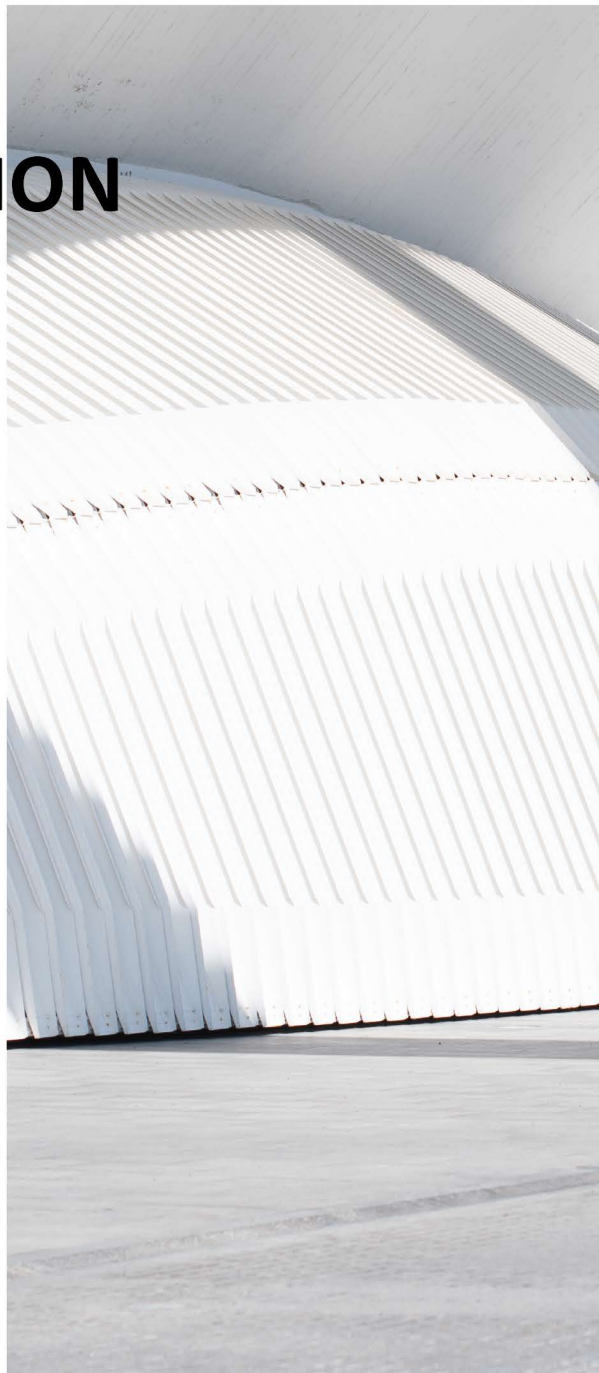
WHEELS *4x58mm flash wheels



MICRO / DELTA COLLECTION

Micro Delta products are designed to excel in high-level skating competitions while also being ideal for daily training. Crafted with exceptional quality and durability, our products use carefully selected materials. Each new product undergoes rigorous quality control at every stage of development and production to meet national and international safety standards.

At Micro Delta, we are committed to craftsmanship and meticulous design and manufacturing. These values are evident in all aspects of our operations as we expand globally and create contemporary skater essentials.



SKATES FOR EVERYBODY

 **MICRO
DELTA**





INLINE FREESTYLE

Micro Delta Inline Freestyle skates epitomize excellence in skating gear. Crafted to cater to various ages and disciplines, our skates undergo meticulous testing and refinement alongside skaters worldwide. Designed with ergonomic precision, each model ensures optimal performance for both training and competitive events, all while prioritizing comfort. Whether you're cruising the streets or training for competitions, Micro Delta Inline Freestyle skates provide unmatched responsiveness and an exceptional skating experience.

Delta Recreation

■ The ultimate bang-for-buck model

● - MIS-DR-BL

● - MIS-DR-PK

FULL COVER POWER SUPPORT CUFF

Ensures perfect support for your ankles

GOLDEN TRIANGLE FLAP CONFIGURATION AND SAFETY LOCK BUCKLE

Provide unparalleled envelopment and stability

CRAFTED FROM DURABLE AUTHENTIC MICROFIBER MATERIAL

For longevity, breathability, and eco-friendliness

HEAT-MOULDABLE SHELL FOR A CUSTOM FIT



THICKENED SPRING WHEELS

Made from high-rebound 82A polyurethane



Age / 8 years old above



Max weight / 150kg



Size / #27-29 #30-32 #33-35 #36-38



FRAME

High quality CNC aluminium
rockered frame



BEARINGS

ABEC7



SIZE	27-29		30-32		33-35		36-38
WHEELS (mm)	4x68		4x68		4x72		4x76
FRAME (mm)	207		207		219		231



Delta Liberty

■ Maximum support. Durability. Versatility.

● - MIS-DL-IRID

● - MIS-DL-SILVER

MICRO SKATE'S PATENT CUFF

Ensuring maximum lateral support and flexibility

MOLDABLE CARBON FIBER SHELL

Providing high-strength support
super lightweight feel

HOLOGRAPHIC FABRIC FOR A CAPTIVATING APPEARANCE

MEMORY FITTED LINER FOR PERSONALIZED COMFORT

84A SUPER HIGH REBOUND POLYURETHANE WHEELS



Age / 8 years old above



Max weight / 150kg



Size / #27-29 #30-32 #33-35 #36-38 #39 #40 #41 #42 #43

LOCKING

Safety locked of skating velcro shin strap and 45 degree ratchet ankle strap



FRAME

High quality
CNC aluminium frame



BEARINGS

Micro slalom pro9



SIZE	27-29	30-32	33-35	36-38	39/40	41/42/43
WHEELS (mm)	4x68	4x68	4x72	4x76	4x76	4x80
FRAME (mm)	207	207	219	231	231	243

Delta Liberty POP

○ - MIS-DL POP-WH

■ Light Your Path, Own The Night

FULL COVER POWER SUPPORT CUFF

Ensure maximum support

MEMORY FIT LINER

With a heel stabilizer system

CARBON FIBER SHELL

Support for multi-purpose skating

PHOTOLUMINESCENT MICROFIBER

Battery-Free and long-lasting glow in the night

HIGH-QUALITY ROCKERED CNC ALUMINUM FRAME



Age / 8 years old above



Max weight / 150kg



Size / #27-29 #30-32 #33-35 #36-38 #36 #37 #38 #39 #40



LOCKING

Iridescent spider buckle set



WHEELS

Durable 84A PU wheels



BEARINGS

ABEC-7



SIZE	27-29		30-32		33-35		36-38		36/37/38/39/40
WHEELS (mm)	4x68		4x68		4x72		4x76		4x76
FRAME (mm)	207		207		219		231		231

Delta X

- Top-level setup designed for young techies with a vibrant aesthetic.

● - MIS-DX-BL

● - MIS-DX-PK

PATENTED MICRO SKATE CUFF FOR UNPARALLELED STABILITY

Experience exceptional responsiveness and maximum lateral support

ERGONOMIC MEMORY FIT LINER FOR COMPATIBILITY

Indulge in customized fit and performance

HIGHLY COMFORTABLE MICROFIBER UPPER

Enjoy high comfort and style

HEAT-MOLDABLE CARBON FIBER SHELL

Benefit from lightweight durability



82A SUPER HIGH REBOUND POLYURETHANE WHEELS

Roll smoothly and responsively



Age / 12 years old above



Max weight / 150kg



Size / #27-29 #30-32 #33-35 #36-38



LOCKING

Safety lock buckle and 45 degree ratchet ankle buckle



FRAME

High quality CNC aluminium rockered frame



BEARINGS

Micro twincam ILQ-9 pro urban plus



SIZE	27-29		30-32		33-35		36-38
WHEELS (mm)	4x68		4x68		4x72		4x76
FRAME (mm)	207		207		219		231

Delta Acceleration

● - MIS-DA-BK

■ Poised for victory in speed slalom

UNLOCK MAXIMUM FLEXIBILITY WITH
THE HIDDEN PATENTED CUFF

SECURE FIT WITH THE DUAL BUCKLE
LOCKING MECHANISM

CARBON SHELL BOOT'S
HIGHT-TOP DESIGN

Experience maximum ankle support

SUPER
LIGHTWEIGHT

85A SUPER-REBOUND
SS WHEELS

LAVA TRISKATE ROCKERED FRAME

Navigate with precision using



Age / 8 years old above



Max weight / 150kg



Size / #36-44



UPPER

Micro fiber leather



LINER

3D shaped memory foam,
durable and breathable ventilated liner



FRAME

7000 series
high quality aluminium



BEARINGS

Micro twincam
ILQ-9 pro urban plus



SIZE	36/37/38/39/40 41/42/43/44	
WHEELS (mm)	3x90	3x100
FRAME (mm)	213	234

Delta Noval

■ Heat-moulded for speed slalom excellence

● - MIS-DN-BL

● - MIS-DN-PK

BUILT-IN MEMORY FIT LINER

Indulge in comfort and perfect command control

HEAT-MOULDABLE BOOT FEATURING HEAT TECH FORMING

CARBON CONSTRUCTION SHELL AND MID-CUT DESIGN

Maximum ankle support

SUPER
LIGHTWEIGHT

Petite
Size

85A SUPER-REBOUND SS WHEELS

Roll with confidence

LAVA TRISKATE ROCKERED FRAME

Crafted from 7000 series aluminium



Age / 8 years old above



Max weight / 150kg



Size / #31 #32 #33 #34 #35 #36 #37 #38 #39 #40 #41 #42 #43



CUFF

High resistant polypropylene



LOCKING

Safety lock buckle and 45 degree hook and loop ankle strap



UPPER

Micro fiber leather



BEARINGS

Slalom pro 9



SIZE	31-40 41-43
------	---------------

WHEELS (mm)	3x90 3x100
-------------	--------------

FRAME (mm)	213 234
------------	-----------

DW

■ Break limits, break records

- - MIS-DW-BL
- - MIS-DW-PK
- - MIS-DW-BK

STABLE ANKLES FOR MAXIMUM POWER

S-LOCK low-cut cuff with tight-fit collar for secure moves

COMFORT THAT LASTS

Memory fit foam liner for all-day comfort

LIGHTWEIGHT FOR FASTER ACCELERATION

HONEYCOMB full carbon shell for quick starts

NO MORE PINCHING OR PRESSURE POINTS

Pro-tested foot lasts ensures perfect fit



STABLE AND AGILE SPEED SLALOM CONTROL

7000-series frame with super-high-rebound wheels and high-precision bearings for stability and speed



Age / 6 years old above



Max weight / 150kg



Size / #29-43



UPPER
Microfiber



LOCKING
45-degree golden triangle flap
lock buckle and detachable power strap



WHEELS
85a super high-rebound
phantom wheels



BEARINGS
Slalom pro 9 bearings



SIZE 29-32 | 33-43

WHEELS (mm) 3x90 | 3x100

FRAME (mm) 213 | 234

HML Pro

● - MIS- HML PRO-RD

- A collaboration with top 10 inline freestyle skater
- Hsieh Mu Lun

TOP HEAT-MOLDED CARBON SHELL WITH CUFF

Lightweight yet supportive
for optimal performance

PREMIER MICROFIBER UPPER

Ventilated design ensures breathability
and a snug fit



SUPER HIGH REBOUND WHEELS

For smooth and responsive skating

BAT ROCKERED FRAME

Crafted from high-quality aluminium
for durability and precision



Age / 12 years old above



Max weight / 150kg



Size / #34 #35 #36 #37 #38 #39 #40 #41 #42 #43 #44



LOCKING

Safety lock buckle and
45 degree ratchet ankle buckle



LINER

Memory foam liner



BEARINGS

Micro twincam
ILQ-9 pro urban plus



SIZE	34-40		41-44
WHEELS (mm)	4x76		4x80
FRAME (mm)	231		243

Delta Plus

● - MIS-DP-BK

■ Elevating comfort to new heights

NYLON AND FIBER COMPOSITE CUFF

Provides full cover power support

MEMORY FIT LINER

Thickened for a snugger fit

MICROFIBER UPPER

Offers a nice, snug fit

HEAT-MOULDABLE CARBON SHELL

HIGH-REBOUND POLYURETHANE WHEELS

4×85A with a round profile

MICRO TWINCAM ILQ-9 PRO URBAN PLUS

Ensure silent and high-speed experience



Age / 12 years old above



Max weight / 150kg



Size / #38-44



FRAME

High quality
CNC aluminium rockered frame



LOCKING

Safety lock buckle and
45 degree ratchet ankle buckle



SIZE 38-40 | 41-44

WHEELS (mm) 4x76 | 4x80

FRAME (mm) 231 | 243

Delta Plus Carbon

● - MIS-DPC-BK

- Experience enhanced support with a 100% carbon cuff

100% CARBON CUFF FOR EXTRA STIFFNESS

Experience ultimate stiffness and control

MEMORY FIT LINER, THICKENED FOR A SNUG

Indulge in enhanced comfort and fit

MICROFIBER UPPER FOR A NICE SNUG FIT

Enjoy optimal support and fit

HEAT-MOULDABLE CARBON SHELL

Customize your fit

HIGH-REBOUND POLYURETHANE WHEELS

85A round profile

MICRO TWINCAM ILQ-9 PRO URBAN PLUS

Experience silent and high-speed rotation



Age / 12 years old above



Max weight / 150kg



Size / #38-44



LOCKING

Safety lock buckle and 45-degree ratchet ankle buckle



FRAME

High quality CNC aluminium rockered frame



SIZE 38-40 | 41-44

WHEELS (mm) 4x76 | 4x80

FRAME (mm) 231 | 243

Delta Force

● - MIS-DF-BK

■ Pioneering the quintessential classic, forever.

PERFECT MEMORY FIT LINER

WRAP PERFECTLY WITH
A NICE SNUG FIT

Thanks to the microfiber upper

**Extended
Size**

100% HEAT-MOLDING
CAPABILITIES ENSURE COMFORT

Even during long training sessions


Petite Size

HIGH-REBOUND POLYURETHANE
PERFORMANCE WHEELS

4x85A round profile

ENJOY HIGH PRECISION AND
SILENT OPERATION

With micro twincam ILQ-9 pro urban plus



Age / 12 years old above



Max weight / 150kg



Size / #35-46



CUFF
Carbon fiber



LOCKING
Shin ratchet buckle,
45-degree ratchet ankle buckle



FRAME
High quality
CNC aluminium frame



SIZE	35-40 41-46
-------------	---------------

WHEELS (mm)	4x76 4x80
--------------------	-------------

FRAME (mm)	231 243
-------------------	-----------

Delta Force II

■ Stand out with sleek design and top performance

○ - MIS-DF II-SV

● - MIS-DF II-BK



Age / 12 years old above



Max weight / 150kg



Size / #35-46



UPPER
Micro fiber



CUFF
Carbon fiber



LOCKING
Shin ratchet buckle,
45-degree ratchet ankle buckle



BEARINGS
Micro twincam ILQ-9 pro
urban plus



SIZE 35-40 | 41-46

WHEELS (mm) 4x76 | 4x80

FRAME (mm) 231 | 243

Delta Force2 BK

● - MIS-DF2 BK

■ Black Diamond, Top Shelf



👤 Age / 12 years old above

🏋️ Max weight / 150kg

📏 Size / #36-42



FRAME

Lightweight
melt 2 rocker frame



WHEELS

High rebound
82a polyurethane wheels



BEARINGS

Micro twincam ILQ-9 pro
urban plus bearings



SIZE	36/37/38/39/40 41/42	
WHEELS (mm)	4x76	4x80
FRAME (mm)	231	243

D3LTA

● - MIS-D3LTA-BK

- 3-wheel carbon skates for urban skating



Age / 12 years old above



Max weight / 150kg



Size / #35-46



UPPER
Micro fiber



LOCKING
Shin ratchet buckle, 45 degree
ratchet ankle buckle and hook & loop toe strap



SIZE

35-39 | 40-42 | 43-46

WHEELS (mm)

3x100 | 3x110 | 3x125

FRAME (mm)

210 | 230 | 260



SPEED

Micro Skate's Speed Inline skates are designed to offer skaters the competitive edge required to improve their race times. The entire product lineup includes lightweight carbon fiber shells, high-quality aluminum frames, precision bearings, and more.

NEW DSJ

- Easily switch, 3/ 4 wheels compatible

● - MIS-DSJ-PK

● - MIS-DSJ-BL

EXTENDED COLLAR DESIGN

Enhanced ankle fit and flexibility

SURELATCH ANKLE BUCKLE

Secure fit and tight, withstands impacts

CARBON FIBER SHELL

Lightweight and more custom fit

ERGONOMIC LAST DESIGN

Perfect fit through extensive testing



SIZE-ADJUSTABLE 3D INSOLE

Boosts comfort and performance

5-HOLE HIGH-QUALITY CNC ALUMINIUM FRAME

Easy switch between 3 and 4 wheels



Age / 3-18 years old



Max weight / 100kg



Size / #27-29 #30-32 #33-35 #36-38



UPPER

Super micro fiber leather



WHEELS

85A super high rebound polyurethane wheels



BEARINGS

Micro twin cam ILQ-9 pro urban plus



SIZE	27-29		30-32		33-35		36-38
WHEELS (mm)	4x84		4x84		4x90		4x90
MOUNTING(mm)	150/165		150/165		165/195		165/195



Delta Speed Elite Plus

■ Snug fit, Speed to win

○ - MIS-DSE PLUS-WH

● - MIS-DSE PLUS-BK



Age / 12 years old Above



Max weight / 150kg



Size / #35 #36 #37 #38 #39 #40 #41 #42 #43 #44



UPPER
Microfiber



WHEELS
85A high-rebound PU wheels



BEARINGS
Micro twincam ILQ-9 pro urban plus



SIZE	35/36/37/38		39/40		41/42/43/44
WHEELS (mm)	4x90		4x100		4x110
MOUNTING(mm)	165/195		165/195		165/195

BOOT ONLY

This category includes skate boots only, without frames, wheels, or bearings.

It's ideal for skaters who already have their own setup or want complete freedom to build a personalized frame and wheel combination.



Beat Boot

○ - MIS-BEAT BOOT-WH

REPLACEABLE SHADOW GUARD LINER CUFF

Could enhance ankle support

REMOVABLE, WASHABLE, AND COMFORTABLE LINER

HIGH-RESISTANT POLYPROPYLENE BASE AND CUFF

For maximum durability and support

UNRIVALED COMFORT WITH A SUPER COMFORTABLE MICROFIBER UPPER

Water-repellent to tackle any weather conditions

ANTI-SLIP PROTECTOR

DISPATCHABLE SHOCK-ABSORBING PAD

Ensuring comfort and safety in skating



Age / 12 years old above



Max weight / 150kg



Size / #35-36 #37-38 #39-40 #41-41 #43-44



Fit for / Urban skating



UPPER
Microfiber



LOCKING
45-degree hook and loop ankle
strap and top memory lock buckle



MOUNT
165mm
3-hole mounting

Delta Noval Boot

● - MIS-DN BOOT-BL

● - MIS-DN BOOT-PK

BUILT-IN MEMORY FIT LINER

Indulge in comfort and perfect command control



HEAT-MOULDABLE BOOT FEATURING
HEAT TECH FORMING

CARBON CONSTRUCTION SHELL AND MID-CUT DESIGN

Maximum ankle support



Age / 8 years old above



Max weight / 150kg



Size / #31-#43



Fit for / Speed slalom



UPPER

Microfiber upper paired
with iridescent TPU details



LOCKING

45-degree golden triangle flap lock
buckle and shin ratchet buckle



MOUNT

150mm/165mm
5-hole mounting

Delta Acceleration Boot

● - MIS-DA BOOT-BK



👤 Age / 8 years old above

🏋️ Max weight / 150kg

📏 Size / #36 #37 #38 #39 #40 #41 #42 #43 #44

👤 Fit for / Speed slalom






UPPER
Microfiber



MOUNT
165mm
5-hole mounting

DW Boot

-  - MIS-DW BOOT-BL
-  - MIS-DW BOOT-PK
-  - MIS-DW BOOT-BK

S-LOCK LOW-CUT CUFF WITH TIGHT-FIT COLLAR FOR SECURE MOVES

MEMORY FIT FOAM LINER FOR ALL-DAY COMFORT



PRO-TESTED FOOT LASTS ENSURES PERFECT FIT

HONEYCOM FULL CARBON SHELL FOR QUICK STARTS



Age / 6 years old above



Max weight / 150kg



Size / #29-43



Fit for / Speed slalom



UPPER
Microfiber



LOCKING
45-degree golden triangle flap
lock buckle and detachable power strap



MOUNT
165mm
9-hole mounting

Delta Plus Boot

● - MIS-DP BOOT-BK

NYLON AND FIBER COMPOSITE CUFF

Provides full cover power support

MEMORY FIT LINER

Thickened for a snugger fit

HEAT-MOULDABLE CARBON SHELL

MICROFIBER UPPER

Offers a nice, snug fit



Age / 12 years old above



Max weight / 150kg



Size / #38-44



Fit for / Urban skating, inline freestyle



UPPER
Microfiber



LOCKING
Safety lock buckle, 45-degree ratchet
ankle buckle and hook & loop toe strap



MOUNT
165mm
5-hole mounting

Delta Plus Carbon Boot

● - MIS-DPC BOOT-BK

100% CARBON CUFF FOR EXTRA STIFFNESS

Experience ultimate stiffness and control

MEMORY FIT LINER, THICKENED FOR A SNUG

Indulge in enhanced comfort and fit

PREMIUM MICRO FIBER UPPER

Strong, light, and built to last

HEAT-MOULDABLE CARBON SHELL

Customize your fit



Age / 12 years old above



Max weight / 150kg



Size / #38-44



Fit for / Urban skating, inline freestyle



UPPER
Microfiber



LOCKING
Safety lock buckle, 45-degree ratchet
ankle buckle and hook & loop toe strap



MOUNT
165mm
5-hole mounting

Delta Force II Boot

○ - MIS-DFII BOOT-SV

● - MIS-DFII BOOT-BK

CARBON FIBER CUFF

Provides excellent ankle support and stability for confident control

THICKENED MEMORY-FIT LINER

Designed with heel stabilizer to deliver a secure, snug, and wrap-around fit

HEAT-MOLDABLE CARBON FIBER SHELL

Lightweight yet rigid for efficient power transfer and a customized fit

ABRASION-RESISTANT SIDE PADS & TOE CAP



Age / 12 years old above



Max weight / 150kg



Size / #35-46



Fit for / Urban skating, inline freestyle



UPPER
Microfiber



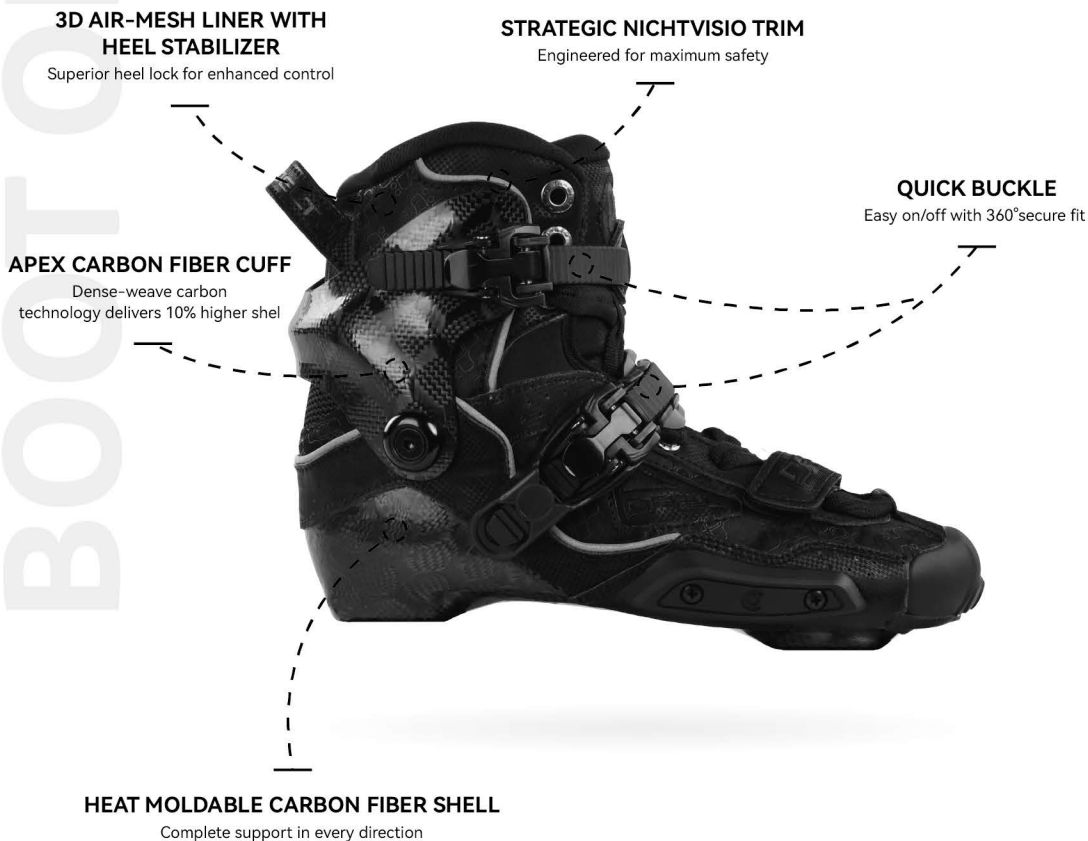
LOCKING
Safety lock buckle, 45-degree
ratchet ankle buckle and velcro toe strap




MOUNT
165mm
7-hole mounting


Delta Force2 BK Boot


● - MIS-DF2 BK-BOOT



 Age / 12 years old above

 Max weight / 150kg

 Size / #35-46

 Fit for / Urban skating, inline freestyle



UPPER
Microfiber



MOUNT
165mm
7-hole mounting

New DSJ Boot

● - MIS-DSJ BOOT-PK

● - MIS-DSJ BOOT-BL

EXTENDED COLLAR DESIGN

Enhanced ankle fit and flexibility

SURELATCH ANKLE BUCKLE

Secure fit and tight, withstands impacts

CARBON FIBER SHELL

Lightweight and more custom fit

ERGONOMIC LAST DESIGN

Perfect fit through extensive testing

SIZE-ADJUSTABLE 3D INSOLE

Boosts comfort and performance



LIGHTWEIGHT



Age / 3-18 years old above



Max weight / 100kg



Size / #27-29 #30-32 #33-35 #36-38



Fit for / Speed skating



UPPER
Microfiber



MOUNT
9-hole mounting

Delta Speed Elite Boot

○ - MIS-DSE BOOT-WH

SNUG ANKLE COLLAR

Secure fit for precise support and power transfer

WELL-PADDED HEEL SUPPORT

Cushions heel and ankle to prevent rolling

SURELATCH FASTENING SYSTEM

Unbreakable and impact-resistant

LIGHTWEIGHT CARBON FIBER SHELL

For faster, effortless skating

ERGONOMIC LAST

Precision-fit, inspired by pros



Age / 12 years old above



Max weight / 150kg



Size / #36 #37 #38 #39 #40 #41 #42 #43 #44



Fit for / Speed skating



UPPER
Microfiber



MOUNT
165mm/195mm
9-hole mounting

m-oro

DESIGN / YOUR OWN

Would you like a skate that's special and unique to you? Micro can make that happen! We offer unique materials, a variety of frame and wheel colors, and even embroidery with your name on the skate. Let us create a one-of-a-kind skate just for you. Enjoy the custom skate experience!





DESIGN YOUR OWN



Delta
Liberty Pop
[DYO]



HML PRO
[DYO]



DW
[DYO]



Delta
Force2 BK
[DYO]

FRAME /



FIRE

MSA-FFR-BK



FIRE 2

MSA-FFR2-BK



MILO

MSA-MFR-BK



LAVA

MSA-LVFR-BK



LAVA GEN3

MSA-LVFR3.0-PK



MSA-LVFR3.0-BK



HOT

MSA-FR-SV



MSA-FR-RD



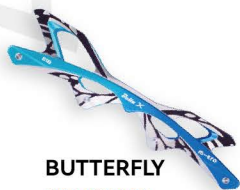
MSA-FR-BL



MSA-FR-BK



MSA-FR-GD

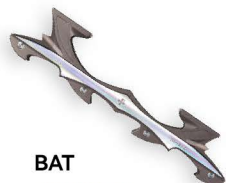


BUTTERFLY

MSA-BYFR-BL



MSA-BYFR-PK



BAT

MSA-BFR-SV



MELT2

MSA-MFR2-BK



MSA-MFR2-SV



PALM 5

MSA-PALM5 FR-BK



COLD

MSA-CF-BK



COLD FRAME BLADE

MSA-IBW

WHEELS /

■ DIA-90/100/110mm



DH

MSA-DHWH-WH

■ DIA-84/90/100/110mm



DS

MSA-DSWH-WH

■ DIA-100/110mm



SS

MSA-SSWH-BK

■ DIA-90/100mm



PHANTOM

MSA-PHWH-PUR

■ DIA-76/80mm



BRAVE

MSA-BRWH-MINT



MSA-BRWH-MBL



TORNADO

MSA-TNDWH-BK



MSA-TNDWH-SV



MSA-TNDWH-PUR

■ DIA-76/80mm



PERFORMANCE

MSA-SRWH-RD



MSA-SRWH-YL



MSA-SRWH-BL



MSA-SRWH-GR

■ DIA-68/72/76mm



DX

MSA-NDXWH-BL



MSA-NDXWH-PK

■ DIA-68/70/72/76/80mm



CRYSTAL

MSA-CRYWH-BL



MSA-CRYWH-PK



MSA-CRYWH-TR

WHEELS /

■ DIA-100/110mm

■ DIA-125mm



FLOW

MSA-FLW-BK

■ DIA-76/80/90mm



SF

MSA-SFWH-BK

MSA-SFWH-CR

MSA-SFWH-EMD

MSA-SFWH-VT

MSA-SFWH-SAND

■ DIA-76/80mm



FLASH

MSA-DFLWH-BL

MSA-DFLWH-PK

MSA-DFLWH-GRE

MSA-DFLWH-PUR

MSA-DFLWH-PEARL

■ DIA-90/100mm

■ DIA-110/125mm



FLASH

MSA-DFLWH-PEARL

■ DIA-70mm



FLASH

MSA-MJWH-BL

MSA-MJWH-RD

BEARING /

GSA CERAMICS BEARING

MSA-GCB-BK



MICRO TWINCAM BEARINGS

MSA-BE-ILQ-9



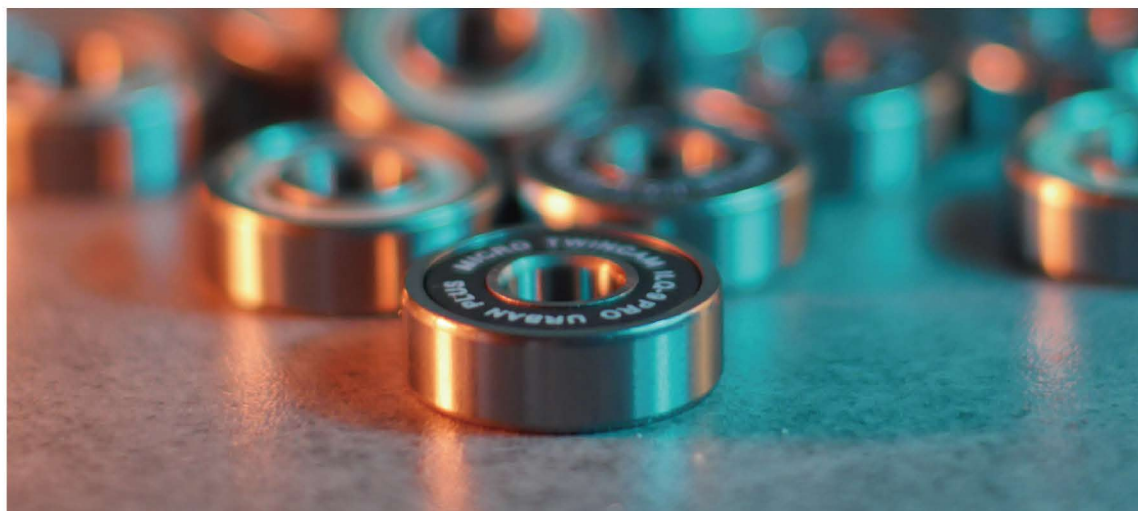
ABEC 9 ULTIMATE BEARING

MSA-ABEC9UTM-PUR



SLALOM PRO 9 BEARING

MSA-BE-PRO 9-BL



PROTECTION /



FLY HELMET

MSA-KHE-PK



MSA-KHE-BL



CROWN HELMET

MSA-SPHE-BK

MSA-SPHE-WH

MSA-SPHE-BL

MSA-SPHE-PK



FLASH HELMET

MSA-FLHE-SAND



ROUND HELMET

MSA-RHE-BK



IMPACT PROTECTIONS

MSA-PR-BL



MSA-PR-PK



SHOCK PROTECTIONS

MSA-PR-BK



MSA-PR-FFY YL



SHOCK (W) PROTECTIONS

MSA-RPR-WH



BUTTOCK PROTECTION

MSA-CRP-BL



MSA-CRP-PK

BAG /

MINI SKATE BACKPACK

MSA-MSBP-BK



KIDS BACKPACK

MSA-BPB-BL



MSA-BPB-BK



MSA-BPB-PK



BASIC BAG

MSA-SKBG-BL



MSA-SKBG-PK



SKATE BACKPACK

MSA-SBP-BK/GREY



MSA-SBP-BK/GRE



TROLLEY BAG

MSA-DTRL-BK



OTHER /



BRAKE SET
MSA-BR-MT-PP



MSA-BR-MT



GREY SOCKS
MSA-SSKP-GY



KIDS SOCKS
MSA-SSKP-BL



MSA-SSKP-PK



CARBON CUFF
MSA-DFCU-BK



BEARINGS PRESS
MSA-BE-PRESS-GRAY



LACE
MSA-LACE-BL/YL/BK/RD/WH/SAND

OTHER /



CONE

MSA-CO-BL/RD/GR/PK/YL



CRASH PAD

MSA-CRP-BK



SKIN SUIT

MSA-NKSKSU-BL



MSA-NKSKSU-PK



WHEEL COVER

MSA-WC-BK/PK/BL



BRACELET

MSA-BCT-BL



MSA-BCT-PLM



MDSA-BCT-BK



CAP

MSA-CAP-GY



TOOLS BAG

MSA-NPB-FOC-BL/PK/PUR/YL/BK

FIRE 2 FRAME: ULTIMATE VERSATILITY FOR SKATING

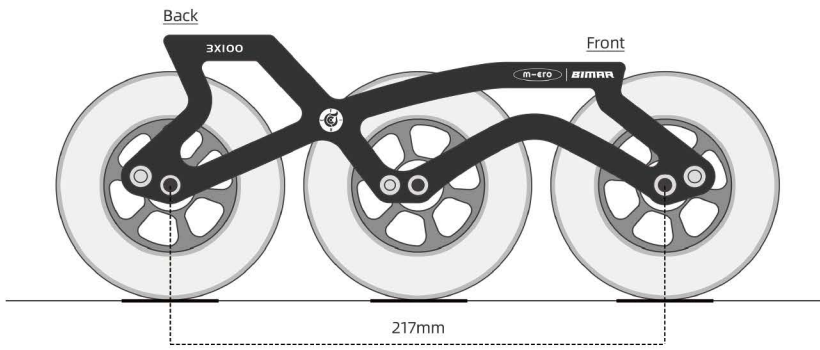


Born from the collaboration between Micro Skates and BIMAR Technical Skates, the Fire 2 Frame was created to give skaters the freedom to switch between setups with ease, no complicated disassembly required. Every detail was carefully tested, refined, and perfected, resulting in a frame that adapts effortlessly to multiple skating styles. With the Fire 2 Frame, skaters can fully immerse themselves in their tricks, explore new techniques, and push their performance to the next level.

At the heart of the Fire 2 Frame is its innovative 6-hole design, allowing effortless transitions between Flat, Rockering Front, Rockering Back, and Rockering front and back modes. Supporting 90 -110 mm wheels and both 165 mm and 195 mm mounting systems, it adapts as quickly as a skater's imagination, letting them fine-tune their setup in seconds, whether training, competing, or simply enjoying the ride.

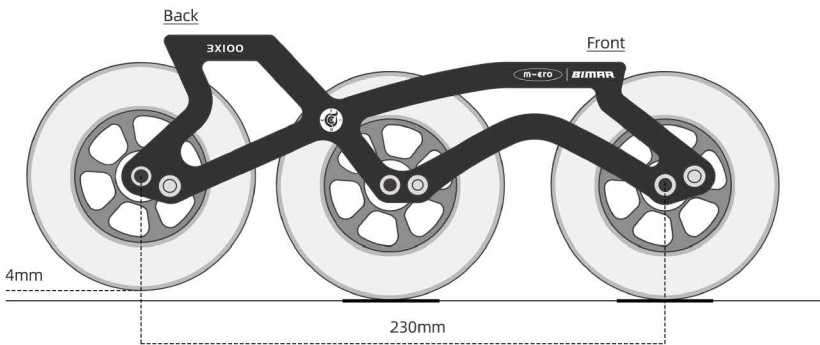
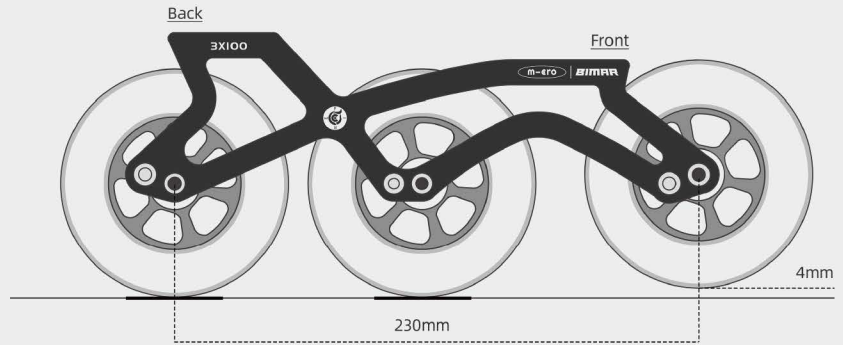
Crafted from high-grade 7000-series aluminum, Fire 2 Frame could transfer every ounce of energy efficiently, provides stable support, and stands up to the demands of freestyle skating.

Everything about Fire 2 was developed with one goal in mind: to make skating easier and more versatile.



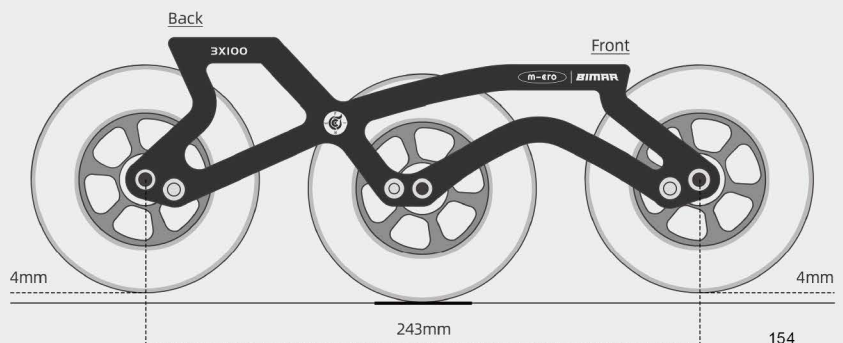
FLAT MODEL

ROCKERING FRONT MODEL



ROCKERING BACK MODEL

ROCKERING FRONT AND BACK MODEL



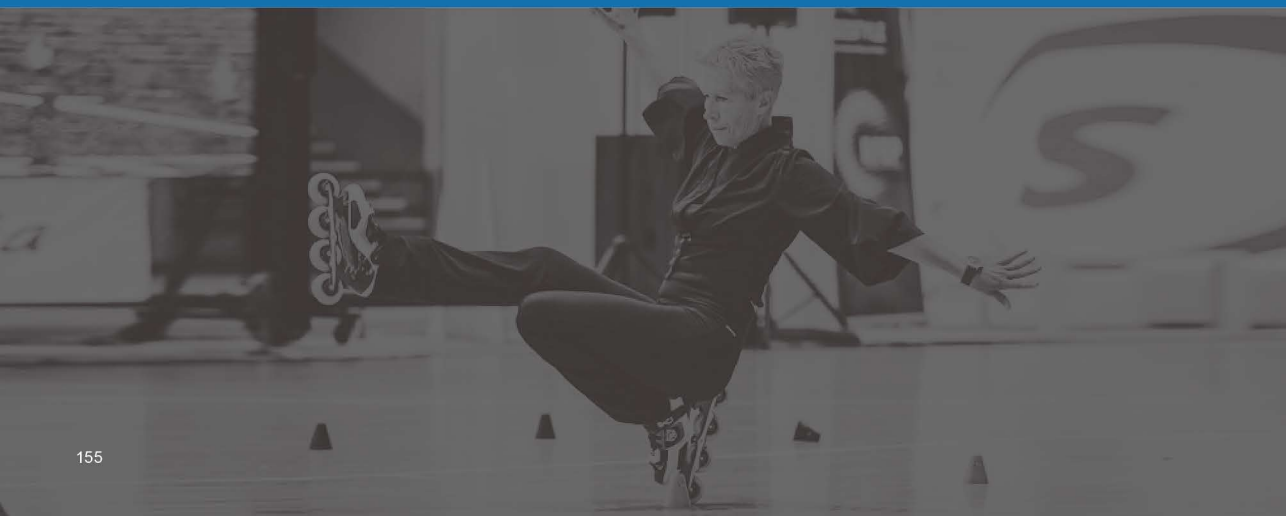
MARYNA BOIKO: REWRITING LIFE'S SCRIPT ON WHEELS

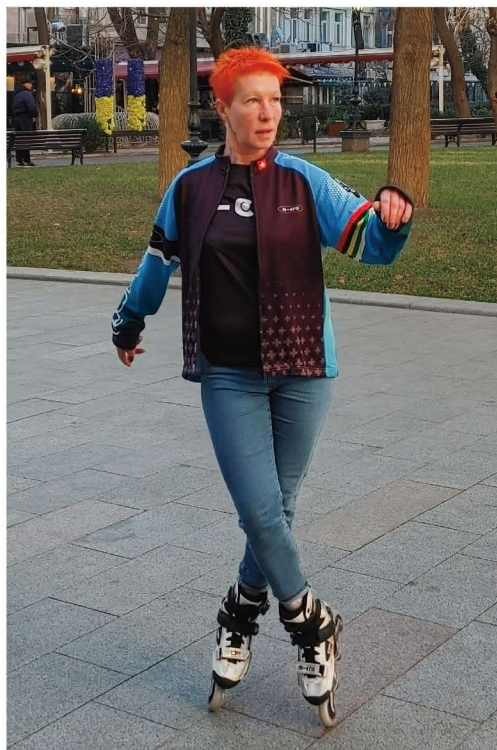


Maryna Boiko is an inline freestyle skater from Ukraine. Her skating journey began at the age of 30 when she started working as a roller skating coach.

Though not initially her primary occupation, everything changed when she discovered freestyle slalom. Her main office job and various activities including figure skating, skiing, parachute jumping, and tourism were all left behind as she redirected all her energy, resources, and time toward her newfound passion.

Since embracing freestyle slalom, Maryna's life has been filled with travel, competitions, and forming connections with like-minded skaters from around the world. She dedicates herself to coaching, conducting master classes, developing training programs and tutorials, and sharing her experience and passion with others in the skating community.





WITH EVERY PERSISTENT EFFORT AND HEARTFELT COMMITMENT, MARYNA BOIKO NURTURED HER FREESTYLE SLALOM DREAM UNTIL IT BLOOMED INTO A VIBRANT CHAMPIONSHIP JOURNEY.



Inline Freestyle World Championship 2024, Roma, Italy – 10th in Classic slalom and 13th in Battle

2024 The World Games Series, Hong Kong – 2d Classic slalom

2024 Chuncheon World Inline Freestyle Cup, Korea – 6th Classic slalom and 5th Slalom Battle

2024 Quixote World Cup – Ciudad Real, Spain – 7th Slalom battle & 11th Classic slalom

Valladolid Lemons Battle 2023 – 2d Slalom battle

Paris Slalom World Cup – 3d Classic slalom

INTERVIEW:

WHAT INSPIRED YOU TO BEGIN SKATING AND EVENTUALLY BECOME DEVOTED TO IT?

- First, roller skating was part of my work – I led roller skating classes for children and adults in my own city, and made dancing programs for show and different events. As a former figure skater, I considered roller skating as an alternative to ice skating with a lot of opportunities and ways to grow. I totally fall in love with skating when started learning freestyle slalom, it became my passion for many years.

IN THE WORLD OF INLINE FREESTYLE, WHAT DO YOU CONSIDER THE MOST CHALLENGING TRICK OR SKILL TO MASTER?

- For me it's any kind of seating tricks.

HOW MUCH TIME DO YOU USUALLY ALLOCATE TO SKATING EACH DAY?

- I'm a skater and also a coach of roller skating. So normally I spend on skates from 2 to 8 hours daily in winter and 6-12 in summer. Of course there are days when I don't put on skates at all.

HOW DO YOU HELP BEGINNERS OVERCOME THEIR FEAR OF SKATING? WHAT DO YOU THINK IS THE MOST IMPORTANT SKILL OR MINDSET TO FOCUS ON IN TEACHING?

- The most common fear of beginners is a fall. Therefore, first of all I pay attention to this – explanation, special exercise, practice of falls. I think one of the important skills in teaching is patience and consistency, as well as attention to detail and the way information is conveyed to the student, because each person has his own physical and psychological characteristics.

WHAT FEATURES OF OUR PRODUCTS HAVE IMPRESSED YOU THE MOST DURING YOUR USE?

- I would say quality, comfort, wear resistance and design.

WHERE IN THE WORLD WOULD YOU LOVE TO EXPLORE WHILE SKATING?

- I would like to ride the embankment along the sea, which connects several cities in Israel. I learned about this place when I led master classes in Israel, but was limited in time. And yes, I want to go back there on skates

WHICH PLACE AROUND THE WORLD ARE YOU MOST EAGER TO EXPERIENCE?

- I want to visit some countries in South America like Brasil, Chili, Argentina. Firstly I have never been there before (for now it mostly a dream), secondly there are many skaters and some of them I know personally.

WHAT'S YOUR APPROACH TO CHOOSING THE RIGHT SKATES AND EQUIPMENT FOR YOURSELF?

- Quality, compliance with my skating activity, foot comfort inside the boot, possibility of repair and replacement of spare parts.

WHICH SKATE MODEL DO YOU CURRENTLY PREFER AND WHY IS IT SPECIAL TO YOU?

- I like delta force II and find them universal, most of the time I use this model of skates - for freestyle, street skating, I work in them (any kind of skating classes). Very comfortable boot, have toe plastic protection and sliders plus perfect design - that's brings more confidence and pleasure in skating.

WHAT'S YOUR OPINION ON MICRO SKATING?

- Good company that provides a lot of quality products, including skates. I feel very happy and grateful to be part of micro skate community.

HOW HAVE YOU HELPED DEVELOP INLINE FREESTYLE LOCALLY? HAVE PARTNERS OR LOCAL SKATE SHOPS SUPPORTED YOU? HOW HAVE THESE COLLABORATIONS BOOSTED THE SPORT?

- My skating school in Odessa was the first in Ukraine to offer professional roller skating training as well as skaters working in "Adrenalin" sports store start develop Inline Freestyle. It's a great luck (or fate) that we are all in the same city – and couldn't help but meet (it was approximately winter 2004–2005) Since then, I started learning freestyle and teach others, and "Adrenaline" store has been supporting the organization of various skating events, including Inline Freestyle competitions. Thanks this collaborations we got many new people enjoying roller skating and freestyle skaters who became athletes or instructors.

WHAT ARE YOUR FUTURE GOALS IN THE INLINE SKATING WORLD? DO YOU HAVE ANY NEW CHALLENGES OR PROJECTS IN THE PIPELINE?

- I started working on creating video tutorials and classes. Perhaps it's time to leave my knowledge and experience for future skaters.

WHAT ADVICE WOULD YOU GIVE TO YOUNG PEOPLE WHO ASPIRE TO ACHIEVE SUCCESS IN INLINE SKATING LIKE YOU HAVE? HOW SHOULD THEY START AND STAY COMMITTED?

- Success it's the result of persistence, patience and belief that you are capable of achieving more. Everyone faced difficulties, doubts, the desire to stop, especially when things go wrong and it seems like there are no progress or moving very slow. So, be ones who refuse to quit – keep moving with small steps and focus on the process. Your growth – is the time and effort you spend on achieving your goals.





TOURING


VOL.02
WORLDWIDE JOURNEY ON
SKATES WITH

**MILANA
ZAITSEVA**

Name: MILANA ZAITSEVA

Nationality: Russia

 **IG:** @milanaroller

 **YouTube:** @milanaroller

 **TikTok:** milanaroller



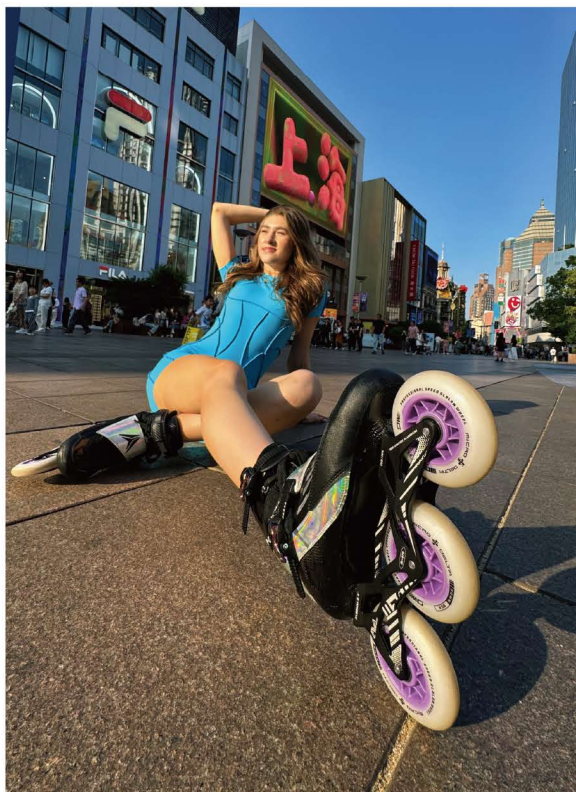
BY SKATING



01 PHU QUOC ISLAND, VIETNAM

THIS PLACE CALL
LOCAL SMALL VENICE

02 SHANGHAI CHINA



Guys, look at my new roller skates. It's
PERFECT!!

Magical Disneyland in Shanghai.

03 EGYPT

Hello Egypt!



04 DUBAI

Are you excited for Christmas?



m-cro



01. ATHENS, GREECE



📍 7TH CHRISEIDOS STR.
KALLITHEA- ATHENS, GREECE



FUTURE SKATE

Future Skate is the official Micro Skate store in Greece! Future Skate offers the latest collections and newest arrivals from the brand. Whether you're looking for high-performance inline skates, stylish quad skates, or essential skate accessories, you'll find a wide range of options to suit your needs!





Athens Metropolitan Park

This expansive area, developed on the grounds of the former international airport, offers extensive paved surfaces ideal for inline skating. The long, smooth runways provide an excellent skating experience with minimal obstacles and plenty of space to build up speed.

NEARBY SKATING SPOTS:



Stavros Niarchos Foundation Cultural Center Park

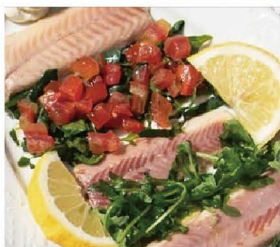
Located in Kallithea, this modern park offers excellent paved pathways specifically suitable for inline skating. The wide, smooth concrete paths wind through beautiful landscaped gardens with minimal inclines, making it perfect for skaters of all levels.



LOCAL RESTAURANT RECOMMENDATION:

Ta Karamanlidika tou Fani

This charming restaurant showcases authentic Greek cuisine with a focus on traditional charcuterie and regional specialties. Located in a historic building near the central market, the restaurant specializes in cured meats and cheeses from various Greek regions, paired with excellent local wines.



Street Souvlaki

Street Souvlaki is a beloved Athens eatery serving authentic Greek souvlaki, featuring grilled meat or halloumi wrapped in warm pita with fresh veggies and tzatziki. Its casual vibe and affordable prices make it a perfect spot for a quick, flavorful meal. A must-try for anyone craving true Greek street food!



LOCAL TOURISM ATTRACTIONS RECOMMENDATION :

Acropolis of Athens

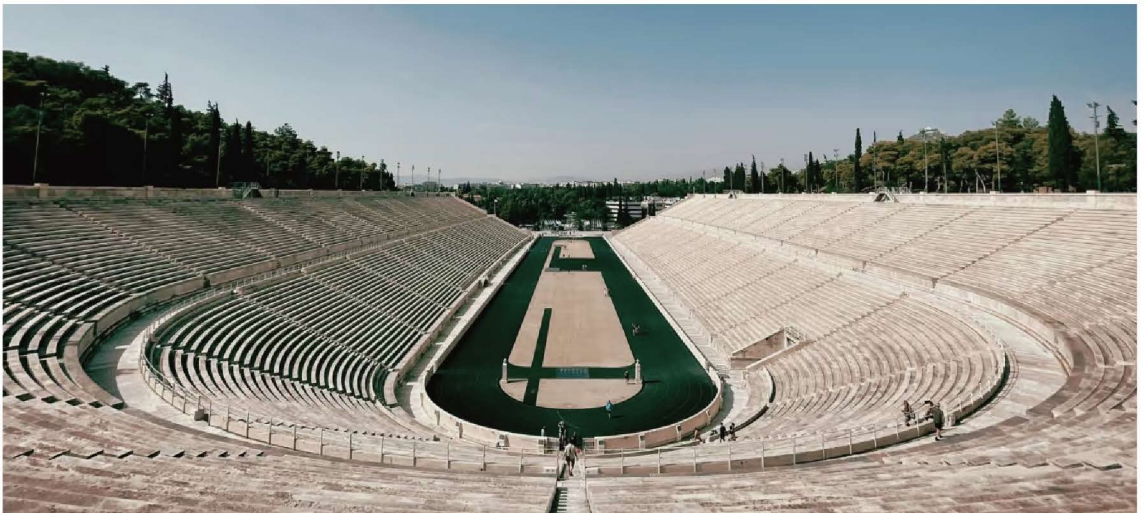
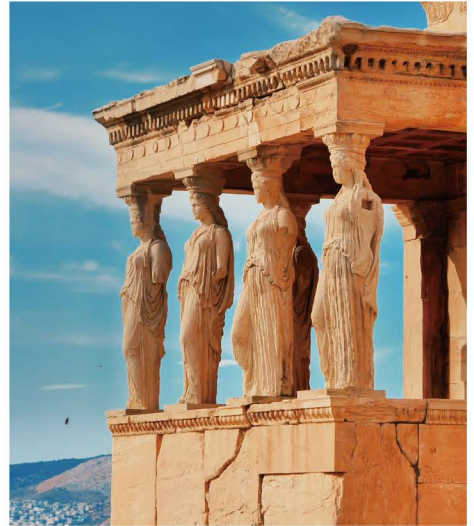
One of the most iconic ancient sites in Greece, featuring the Parthenon and Erechtheion, offering a deep dive into ancient Greek civilization.

Parthenon Temple

The Parthenon is the iconic symbol of ancient Greek civilization, dedicated to the goddess Athena. Its stunning Doric architecture and historical significance make it a must-visit for anyone interested in classical history and culture.

Panathenaic Stadium

The Panathenaic Stadium is the only stadium in the world built entirely of marble and hosted the first modern Olympic Games in 1896. Its historic significance and stunning architecture make it a must-visit for sports and history enthusiasts.





Doon Yuen, Owner of Checker Formula



📍 **MAIN STORE: 1905 EASTERN CENTER, 1065 KING'S ROAD, TAI KOO**

📍 **BRANCH: M2-213 KAI TAK MALL 2, KAI TAK SPORTS PARK, KOWNLOON**

02. HONG KONG, CHINA

CHECKER FORMULA

Checker Formula is no ordinary skate brand. CF was founded by the checker inline Skating School, one of Hong Kong's most respected names in skating. Leveraging years of experience teaching, training, and innovating within the skating community, CF was created to bring skaters what they truly need – high-quality, performance-driven equipment that redefines the standard for inline skating gear.

NEARBY SKATING SPOTS:



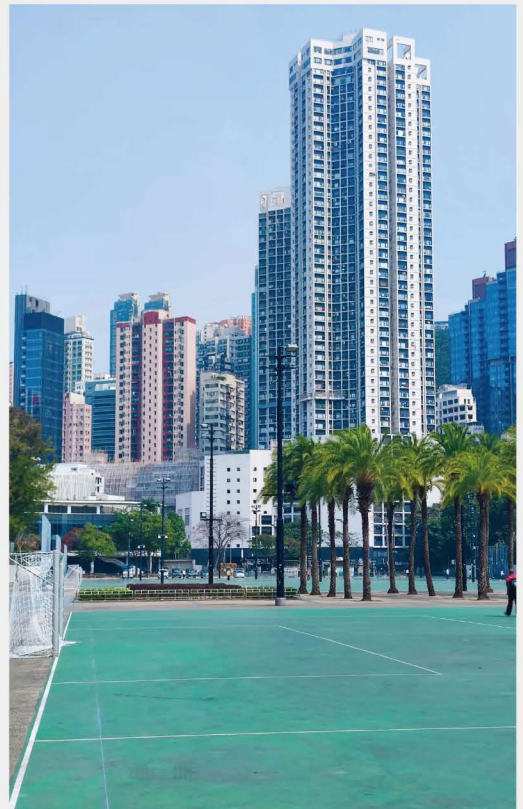
Kowloon Tsai Park Roller Rink

A popular spot in Kowloon for roller skating enthusiasts, offering ample space for practice and casual skating.



Victoria Park Roller Skating Rink

A well-maintained outdoor rink perfect for both inline and quad skates, with a friendly atmosphere for skaters of all levels.



Yat Lok Roast Goose

A Michelin-recommended restaurant known for its crispy and succulent roast goose, a must-try dish in Hong Kong.



Mrs Tang Cafe

Mrs Tang's speciality is her pineapple butter bun with tomato and egg. If a bun isn't enough to satiate your appetite, get a bowl of the delicious tomato noodle soup with chicken wings. Wash it all down with a bottle of "champagne" milk tea, which comes chilled rather than diluted with ice.

LOCAL RESTAURANT RECOMMENDATION:



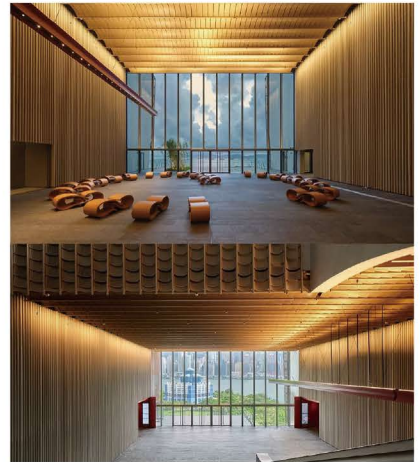


Hong Kong Palace Museum

The Hong Kong Palace Museum showcases priceless artifacts from Beijing's Palace Museum, offering a fascinating glimpse into China's rich cultural heritage. Its modern architecture and interactive exhibits make it a must-visit for culture and history enthusiasts.

Sik Sik Yuen Wong Tai Sin Temple

One of Hong Kong's most famous temples, known for its spiritual significance and vibrant cultural atmosphere.



LOCAL TOURISM ATTRACTIONS / EXPERIENCE RECOMMENDATION :



Star Ferry

A iconic ferry ride across Victoria Harbour, offering breathtaking views of Hong Kong's skyline and a nostalgic experience.



MY SETUP

VOL.02 - NEW FREEJUMP SETUP, REACHING NEW HEIGHTS

Based in Valinhos, São Paulo, Andre Luiz is an accomplished skater in the global Free Jump community.

As a dedicated Free Jump skater, he has earned an impressive record in high-jump competitions, including 13 gold medals, 6 silver, and 5 bronze. With a personal best of 1.55 m, Andre continues to push the boundaries of what's possible on skates.



JUMP WITH THE MICRO DELTA HML PRO

With 97 kg coming back down from that height, the skates really need the quality and durability to handle it.

– André Luiz

Micro Mobility Systems AG

Bahnhofstrasse 10
8700 Küsnacht
Switzerland
Phone: +41(0)44 910 11 22
info@micro.ms
www.micro-mobility.com

Mobility Sport Development & Trading(HongKong) LIMITED

Flat/rm 05, 15/f,
Workingport Commercial
Bldg 3 Hau Fook Street,
Tsim Sha Tsui, Kowloon,Hongkong
m-cro@mspport.com
www.micro-skate.com

Shanghai Mobility Sport Technology Development Co,Ltd

Room 704B, JiaXing Building
No.877 DongFang Road
PuDong, ShangHai, China
m-cro@mspport.com

 micro.skate.world

 @micro.skate

Imprint

The names, logos, and Micro Skate products are protected by copyright.

All information in this catalog is provided without warranty and supersedes content from previous years. Specifications are subject to change without notice.

Concept

Amos Pang / Co-founder and CEO

amospang@mspssport.com

Sunny Qiu / Co-founder and CEO

sunnyqiu@mspssport.com

Content Planning

Grace Yang / Marketing Manager

graceyang@m-crospport.com

Danny Yang / Marketing Coordinator

danny@m-crospport.com

Technical Content

Lily Zhang / Purchasing Manager

lily@mspssport.com

Weiyuan Ou / Engineer

ou@m-crospport.com

Layout & Design

Piaopiao Guo / Designer

guopiaopiao@m-crospport.com

Photos

All brand ambassadors, dealers and distributors

Micro Skate would recommend wearing a helmet as well as elbow and knee pads while skating.



SKATES FOR EVERYBODY



MICRO DELTA

 [micro.skate.world](https://www.facebook.com/micro.skate.world)

 [@micro.skate](https://www.instagram.com/micro.skate)

www.micro-skate.com